

Natural Disasters and Dementia Caregivers: A Roundtable Discussion on Public Health Action

October 27th, 2022



Welcome from...



Joseph E. Gaugler, PhD

Director, BOLD Public Health Center of Excellence on
Dementia Caregiving

Professor and Robert L. Kane Endowed Chair in Long-Term
Care & Aging, University of Minnesota

His research examines innovation in dementia care.



Land acknowledgement

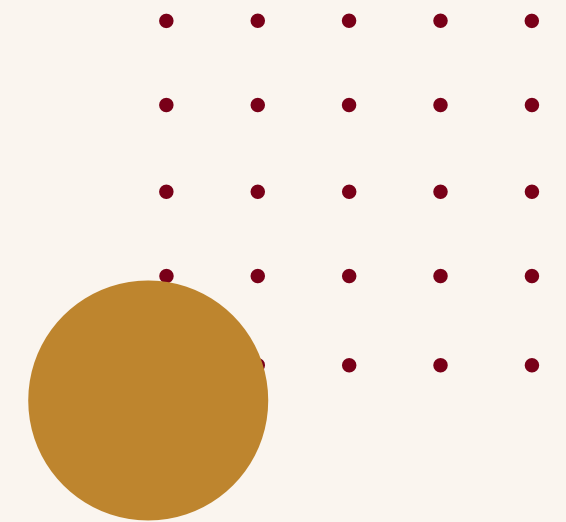
The University of Minnesota Twin Cities is located on traditional, ancestral, and contemporary lands of Indigenous people. We acknowledge with gratitude the Land itself and the People. We take to heart and commit through action to learn and honor the traditional cultural Dakota Values: Courage, Wisdom, Respect and Generosity.



The BOLD Public Health Center of Excellence on Dementia Caregiving (PHCOE-DC)

Designed to support state, tribal and local public health agencies nationwide in developing their dementia caregiving-focused programs and initiatives, by...

- Improving access to evidence-based programs and best practices.
- Facilitating connections and collaboration among public health agencies and a wide range of service organizations.
- Providing technical assistance for identifying, selecting implementing effective public health interventions and strategies.



Defining the Role of Public Health in Climate Change

Speaker: Regina Shih, PhD



Climate change will increase the severity and frequency of weather-related disasters



**DISASTERS
MORE
COMMON**



**DISASTER
COSTS
INCREASING**



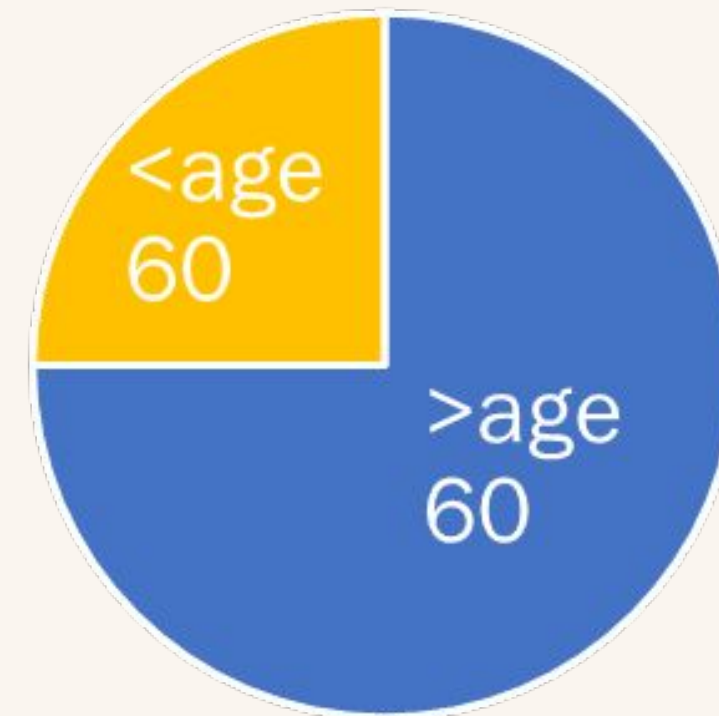
**NEW
DISASTERS
EMERGING**

...and hit older Americans the hardest

66%
OF OLDER ADULTS HAD
NO EMERGENCY PLAN



75%
OF DEATHS FROM KATRINA
WERE OLDER ADULTS



Demographic shifts are driving dementia-related challenges



10,000 baby boomers turn 65 each day; more than 7 million people have dementia



People with dementia frequently have comorbid health conditions



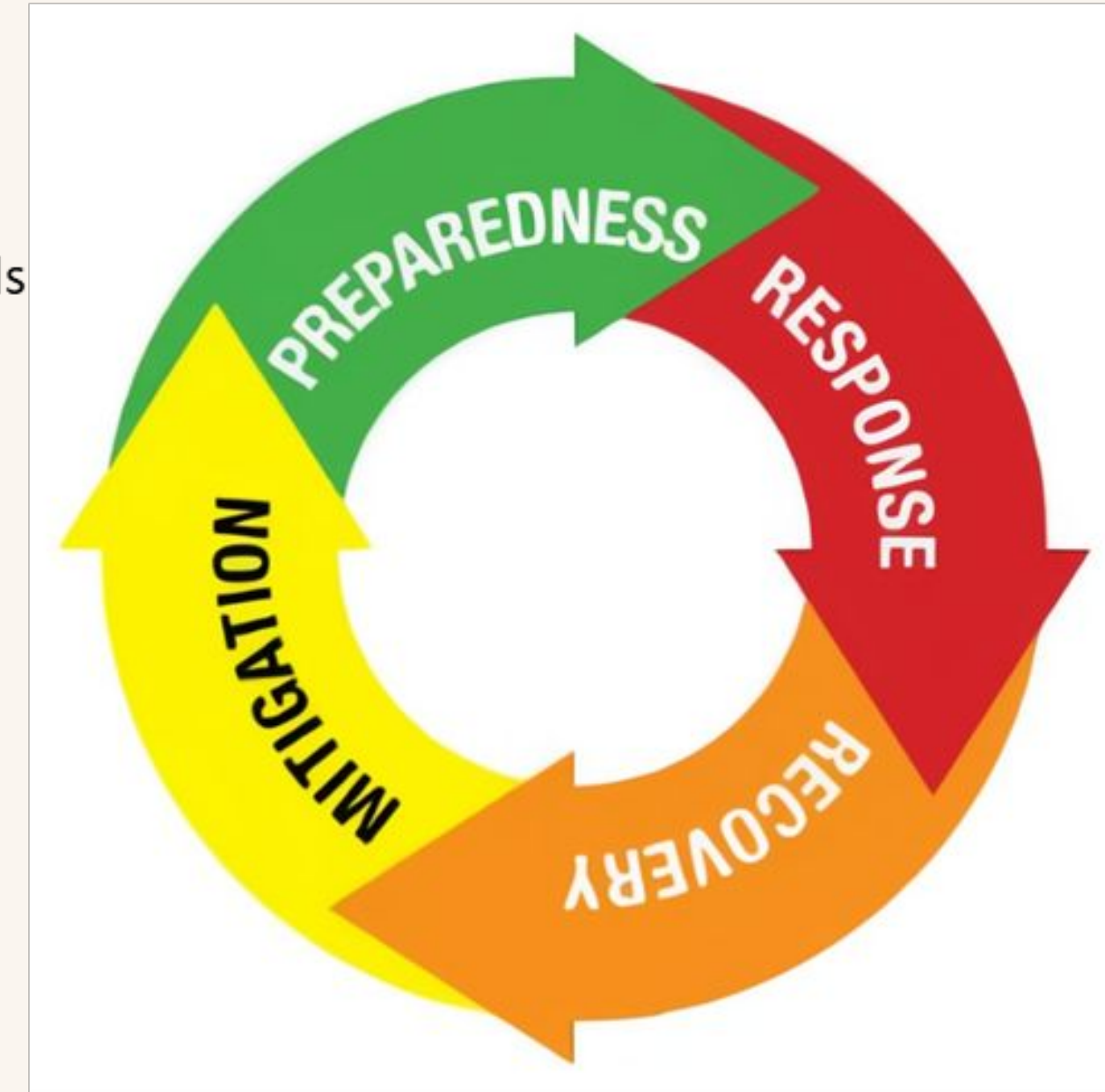
More than four times as many people with dementia live in community settings than in nursing homes



Unpaid family members provide the most care for people with dementia; A third of all family caregivers care for someone living with dementia

Disaster Preparedness, Response, Recovery, and Mitigation

- Preparedness
 - Having an emergency action plan
 - Registering with local emergency management agencies
 - Obtaining access to weather information
 - Preparing for personal needs, prescriptions, paperwork, power sources, practical skills
 - Identifying locations for family reunification
- Response
 - Deciding when to shelter-in-place or evacuate
 - Choosing an evacuation destination
 - Staying connected with family and friends
- Recovery
 - Coping with trauma, stress, anxiety, grief
 - Addressing economic impacts of disaster
 - Returning home and coping with changes in environments
 - Building social connections and community resilience
- Mitigation
 - Preventing emergencies and minimizing the effects if an event occurs



Role of Public Health in Disaster Preparedness, Response, Recovery, Mitigation

- Facilitate access to information for all populations including at-risk, vulnerable populations
- Coordinate with other emergency response organizations
- Develop surveillance systems and maintain registries
- Initiate the public health response during the acute phase of an emergency or disaster
- Obtain resources and surge capacity to carry out public health activities
- Assist with or conduct community assessments for public health emergency response
- Develop plans for risk communication
- Ensure public health personnel are trained and certified

Today's Roundtable Discussion

- **Key Question:** What is the role of public health agencies in disaster preparedness for people with dementia and their family caregivers?
- **Goal:** To discuss challenges and successes to optimizing outcomes for people living with dementia and their family caregivers
- **Key Audiences:** Departments of health and partner organizations who support people living with dementia and their family caregivers
- **Scope:** Natural disasters, community-dwelling people living with dementia, family caregivers to people living with dementia

Resources

Background Information

- [Climate Change & Health: Assessing State Preparedness Report](#) (Johns Hopkins Bloomberg School of Public Health & Trust for America's Health)
- [CDC Policy on Climate Change and Public Health](#) (CDC)
- [Preparedness for Natural Disasters Among Older US Adults: A Nationwide Survey](#) (American Journal of Public Health: Tala M. Al-roushan MD, Linda M. Rubenstein PhD, and Robert B. Wallace MD, MSc)

Resources, Guides, and Toolkits

- [Emergency Preparedness Toolkit for People Living with Dementia](#) (Administration for Community Living & National Alzheimer's and Dementia Resource Center)
- [Disaster Preparedness for Alzheimer's Caregivers](#) (National Institute on Aging)
- [Preparing for Emergencies](#) (Alzheimer's Association)



Resources

Resources, Guides, and Toolkits

- [5 Tips for Helping People with Alzheimer's During an Emergency](#) (Sarah Stevenson, A Place for Mom)
- [Important Heat Safety Tips for Families Affected by Dementia](#) (Alzheimer's Foundation of America)
- [Improving Disaster Resilience Among Older Adults: Insights from Public Health Departments and Aging-in-Place Efforts](#) (RAND Corporation: Regina A. Shih, Joie D. Acosta, Emily K. Chen, Eric G. Carbone, Lea Xenakis, David M. Adamson, Anita Chandra)
- [Disaster Resilience Toolkit](#) (AARP)
- [Public Health Emergency Response Guide](#) (CDC)
- [PUBLIC HEALTH WORKBOOK To Define, Locate, and Reach Special, Vulnerable, and At-risk Populations in an Emergency](#) (CDC)
- [Westford Special Needs Emergency Registry](#) (Westford Health Department and Emergency Management)



Resources

Resources, Guides, and Toolkits

- [Building Older Adults' Resilience by Bridging Public Health and Aging-in-Place Efforts Toolkit](#) (RAND Corporation: Joie D. Acosta, Regina A. Shih, Emily K. Chen, Lea Xenakis, Eric G. Carbone, Lane F. Burgette, Anita Chandra)
- [CDC's BRACE Framework](#) (CDC)
- [How Public Health Professionals Can Advance an Energy Just Future](#) (American Public Health Association)
- [2022 Theme for National Preparedness Month: A Lasting Legacy](#) (Ready.gov)
- [Closing the Gaps: Advancing Disaster Preparedness, Response and Recovery for Older Adults](#) (American Red Cross)
- [Disaster Preparedness for Dementia Caregivers](#) (Alzheimer's Association)



Resources

Resources, Guides, and Toolkits

- [Identifying Vulnerable Older Adults and Legal Options for Increasing Their Protection During All-Hazards Emergencies](#) (CDC)
- [Quick Tips for First Responders](#) (Alzheimer's Association)
- [Resilient Communities: Empowering Older Adults in Disasters and Daily Life](#) (New York Academy of Medicine)
- [Climate and Extreme Weather Events Health Policy Statement](#) (ASTHO)
- [Emergency Preparedness Toolkit](#) (LeadingAge)
- [Disaster Planning Toolkit for People Living with Dementia](#) (ACL, NADRC, and RTI)
- [Disaster Preparedness and Planning for Populations with Dementia and Other Vulnerabilities](#) (Alzheimer's Association)



Welcome panelists!

Nancy Burns, EMT, CHEP, AFAA, AHA-I

Upper Merrimack Valley MRC Coordinator, Westford, Massachusetts
Former Dementia Caregiver

Paul Dunaway, MA

Adult & Aging Division Director, Sonoma County Human Services

Jennifer Harris, BA

Director of Communications & Public Information, Florida Department of Health - St. Lucie
Former Dementia Caregiver

William Kennedy, MSW, LICSW

State Social Work Director, Alabama Department of Health

Nancy Powers-Stone, MA

Director, Redwood Caregiver Resource Center

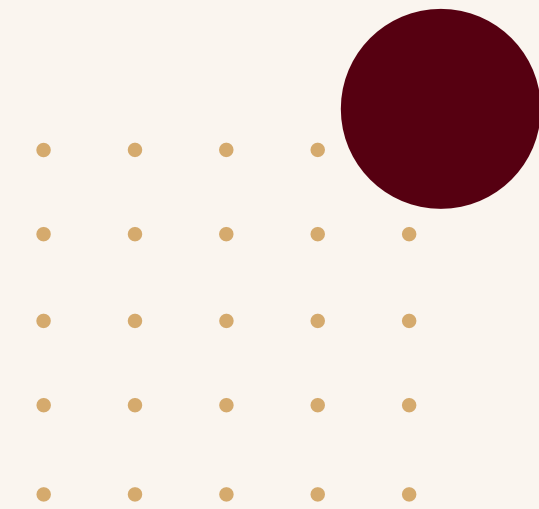
Facilitators:

Regina Shih, PhD

Director, Social and Behavioral Policy Program;
Senior Policy Researcher, RAND Corporation

Robyn I. Stone, DrPH

Senior Vice President of Research at LeadingAge
Co-Director of LeadingAge LTSS Center
at UMass Boston



Panel Discussion

Nancy Burns, EMT, CHEP, AFAA, AHA-I

Paul Dunaway, MA

Jennifer Harris, BA

William Kennedy, MSW, LICSW

Nancy Powers-Stone, MA



Q&A

Please, submit your questions in the Q&A Zoom feature!



Save the date!

Successful Public Health Approaches in Dementia Caregiving: *Mississippi* A Virtual Roundtable Series

In each episode of this virtual round-table series *we will highlight the story of one state* that has successfully implemented a state-wide, innovative, and integrative approach to advancing its dementia caregiving goals. The session will begin with an overview of the state's past, current and future efforts in dementia caregiving, followed by an interactive conversation and Q&A with the attendees about key takeaways and ideas for action they can take in their states and communities. This series offers a great opportunity for knowledge exchange, peer-learning and idea generation. In this episode we will present the story of *Mississippi*.



Kina White, DrPH, MHSA, FACHE

Director, Office of Community Health Improvement
Mississippi State Department of Health
Principal Investigator, Mississippi BOLD Program
Board Member, UsAgainstAlzheimer's Center for Brain
Health Equity



Denise Lafferty, RN, BSN

Chief Strategy and Operations Officer, The Memory
Impairment and Neurodegenerative Dementia (MIND) Center,
University of Mississippi Medical Center

November 15th, 2022 | 12:00pm-1:30pmET | Zoom

REGISTER: <https://bit.ly/SuccessfulPublicHealthApproaches-Mississippi>



[Register Here](#)



Save the date!

Experiences of Diverse Older Adults Living with Dementia

This webinar is intended to educate health care, social service, aging-focused professionals, and anyone interested in brain health about their unique experiences of diverse older adults and their care team in dealing with dementias and mild cognitive impairment. The webinar will share the personal experiences of those diagnosed with dementia and mild cognitive impairment and the experiences of their care team. These personal experiences will touch on how stigma around dementia have affected their lives. Additionally, this webinar will examine findings from the Us Against Alzheimer's A-List survey on Dementia and Stigma. The webinar will end with a Q&A followed by closing remarks.

November 16th, 2022 | 12:00pm-1:30pmET | Zoom



REGISTER:

<https://bit.ly/DiverseDementiaExperiences>

Ocean Le, M.S.
Senior Program Coordinator,
Diverse Elders Coalition

Andrea Robert
Person Living with Mild Cognitive
Impairment

Kevin T. Britton II, Esq.
Caregiver & Associate,
Dorsey & Whitney LLP

Dave Baldrige
Exec. Dir. of the International
Association for Indigenous Aging

Ginny Biggar
Exec. Dir. of Communities,
UsAgainstAlzheimer's

Moderator:

Chelsea Kline, MPH
Assoc. Dir. PHCOE on Risk Reduction,
Alzheimer's Association

[Register Here](#)



Connect with us!

Visit us online at <https://bolddementiacaregiving.org> to....

- ✓ Find today's slides and recording.
- ✓ Request Technical Assistance to support your public health work in dementia caregiving.
- ✓ Access resources and materials.
- ✓ Stay up to date with PHCOE-DC activities.

Follow us on Twitter



@PHCOE_DC



Thank you for joining us today!

Please, take a moment to complete our evaluation form at the end of this presentation.

