



BOLD
PUBLIC HEALTH
CENTER OF EXCELLENCE
ON DEMENTIA
CAREGIVING

Successful Public Health Approaches in Dementia Caregiving: *Wisconsin*

A Virtual Roundtable Series

May 9th, 2023



Welcome from...

Elma Johnson, MPH

Coordinator,

BOLD Public Health Center of Excellence on Dementia Caregiving (PHCOE-DC)

Center for Healthy Aging and Innovation (CHAI)

University of Minnesota




Land acknowledgement


The University of Minnesota Twin Cities is located on traditional, ancestral, and contemporary lands of Indigenous people. We acknowledge with gratitude the Land itself and the People. We take to heart and commit through action to learn and honor the traditional cultural Dakota Values: Courage, Wisdom, Respect and Generosity.




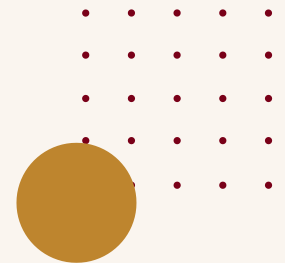
The BOLD Public Health Center of Excellence on Dementia Caregiving (PHCOE-DC)

Designed to support state, tribal and local public health agencies nationwide in developing their dementia caregiving-focused programs and initiatives, by...

 Improving access to evidence-based programs and best practices.

 Facilitating connections and collaboration among public health agencies and a wide range of service organizations.

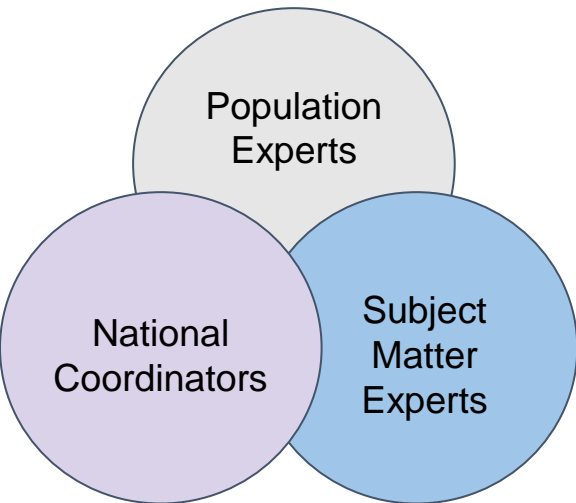
 Providing technical assistance for identifying, selecting implementing effective public health interventions and strategies.



HBI Collaborative

Multi-component approach to fully integrate dementia, cognitive health and caregiving into public health practice

HBI Collaborative



Find us online

- About the HBI Collaborative
- Participating Members
- Contact Information

hbicollaborative.org



hbicollaborative.org



**HEALTHYBRAIN
INITIATIVE**

Collaborative

The Value of State Dementia Registries for Public Health Action in Dementia Caregiving

State disease registries are an invaluable tool for public health agencies for purposes of policy development, service planning and resource allocation. Today, only West Virginia, Georgia and South Carolina have a population-based state dementia registry in the U.S. What can other states learn from their experience and successes? How can public health leverage data from dementia registries to drive action, programs and policies to support dementia caregivers? Join us for answers to these questions and explore possibilities for a registry in your state.

June 12th, 2023 | 11:00am-12:30pmET | Zoom



REGISTER:

<https://bit.ly/StateDementiaRegistries>

Annie Rhodes, PhD

Director, Statewide Virginia Alzheimer's Disease Database, Virginia Commonwealth University
Director, Applied Research of Long-Term Care Department of Gerontology

Taylor Wilson

Director of Government Affairs
Alzheimer's Association
South Carolina Chapter

Catrina Taylor, PhD, MSPH

Chief, Surveillance and Research Section
Director, California Neurodegenerative Disease Registry

Liz Head, MPH

Deputy Directory, Injury Prevention Program
Georgia Department of Public Health

Maggi Miller, MS, PhD

Co-Director & Manager, Alzheimer's Disease Registry
Office for the Study of Aging
Research Assistant Professor
Department of Epidemiology and Biostatistics

Rana Bayakly, MPH

Chief Epidemiologist, Chronic Disease
Georgia Department of Public Health

Scan to register



Successful Public Health Approaches in Dementia Caregiving: *A Virtual Roundtable Series*



Bi-monthly, roundtable series for **public health**.



We will highlight **the story of one state**.

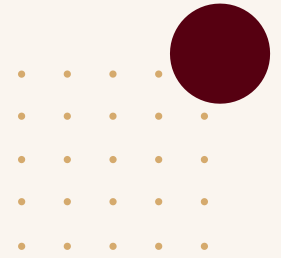


Opportunity for **networking, peer-learning and idea generation**.



A **community of practice**, where agencies can share their successes and learnings, and get ideas for action.

Reminders for the Presentation Session



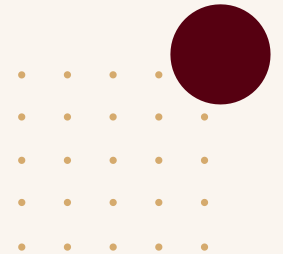
- Please, **MUTE yourself** and **turn your VIDEO ON** while the panelists are presenting.
- Display **your name and organization in Zoom**.
- **Submit your questions for the speakers into the Q&A feature.** Questions will be addressed at the end of the presentation.
- After the presentation and during the Q&A time, please raise your hand if you wish to speak and **only unmute if you are prompted**.
- Use the **CHAT to share comments, resources, links, and ideas**.
- Feel free to use your reaction buttons!
- The recording, slides and resources will be shared after the event.
- **Please complete the survey at the end of this event** (linked in chat). We greatly appreciate your feedback!



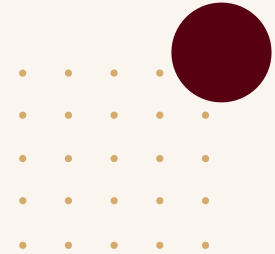
Poll Question

In what capacity are you attending this event?

- BOLD Public Health Agency
- Non-BOLD Public Health Agency
- Community organization/service provider
- Person living with dementia
- Interested caregiver and/or community member
- Care/clinical professional



Welcome our presenter!



Kristen Felten, MSA, APSW

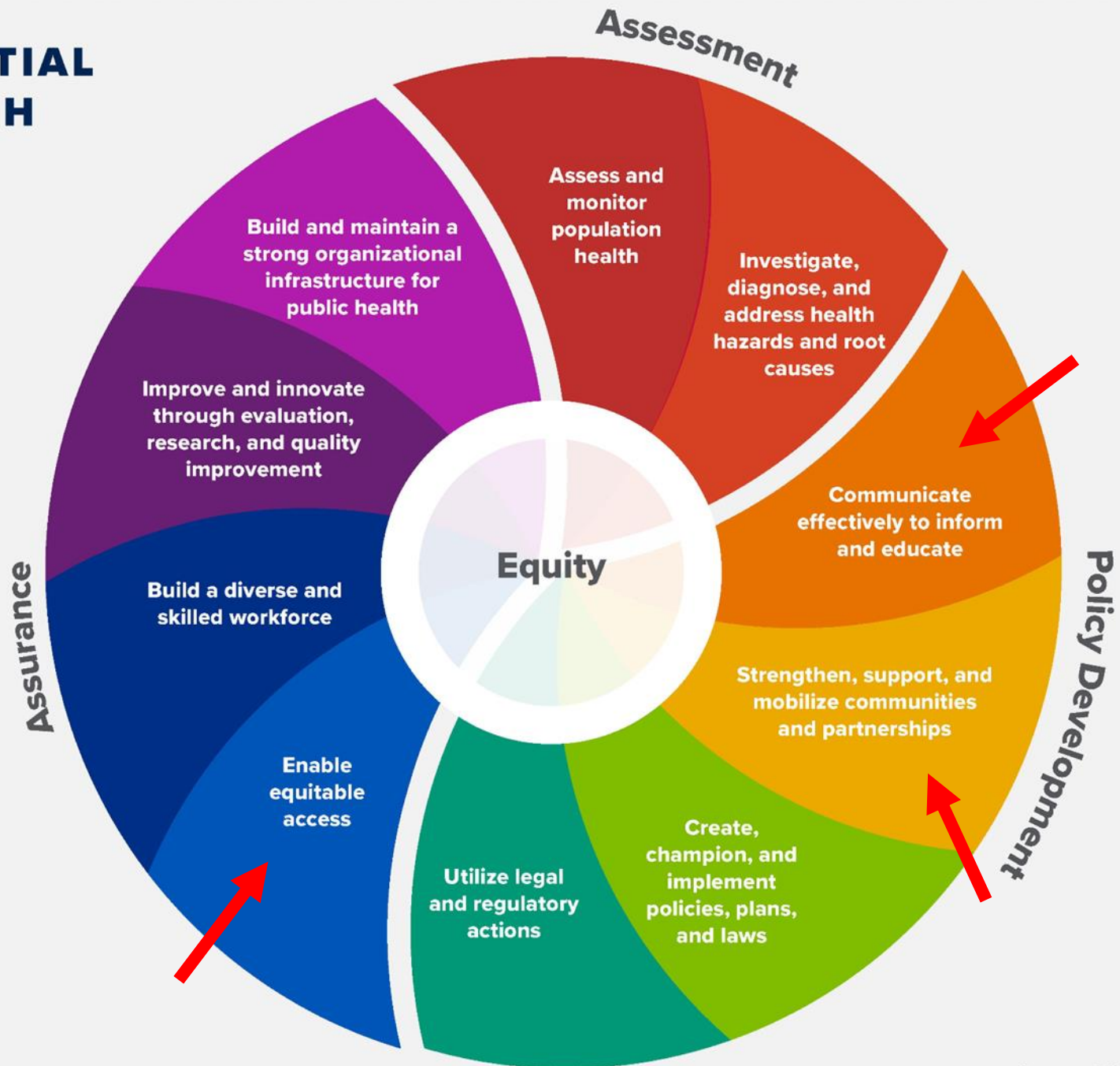
Dementia Specialist, Office on Aging
Wisconsin Department of Health Services



THE 10 ESSENTIAL PUBLIC HEALTH SERVICES

To protect and promote the health of all people in all communities

The 10 Essential Public Health Services provide a framework for public health to protect and promote the health of all people in all communities. To achieve optimal health for all, the Essential Public Health Services actively promote policies, systems, and services that enable good health and seek to remove obstacles and systemic and structural barriers, such as poverty, racism, gender discrimination, and other forms of oppression, that have resulted in health inequities. Everyone should have a fair and just opportunity to achieve good health and well-being.



Wisconsin's Dementia Care Specialist Program: A Statewide Effort to Support People Living with Dementia, Their Family Caregivers, and Their Communities



Kristen Felten, Dementia Specialist,
Bureau of Aging and Disability Resources
Wisconsin Department of Health Services

May 9, 2023

Overview of Presentation

- Fertile ground to plant ideas
- Pilot opportunity
- Expansion funding
- A web of support
- Program in action
- Lessons learned
- Impact

Wisconsin Dementia Care Specialists

How did the dementia care specialist (DCS) program get started?



Administration on Aging (AoA) and Administration for Community Living (ACL) Grant Projects

- 2009: Memory Screening in the Community
- 2010: New York University Caregiver Intervention
- 2010: Language Enriched Exercise Plus Socialization

AoA and ACL Grant Projects

- 2014: Alzheimer's Disease Initiative: Specialized Supportive Services Projects
- 2014: Alzheimer's Disease Supportive Services Program
- 2016: Alzheimer's Disease Supportive Services Program Supplement
- 2019: Alzheimer's Disease Program Initiative DCS Replication

Pilot Project Opportunity

Potential for fiscal support



Timeline

2013

Dementia Care Specialist (DCS) pilot project initiated in five aging and disability resource centers (ADRCs).

2014

Pilot expanded to 11 additional ADRCs, totaling 16 ADRCs.

2015

Additional DCS pilot project funded in three Wisconsin tribes to serve Native American communities.

2017

2017–19 state budget included ongoing funding for 19 DCS positions; expanded program to 24 DCS positions.

2018

Five additional ADRCs were awarded DCS funding.

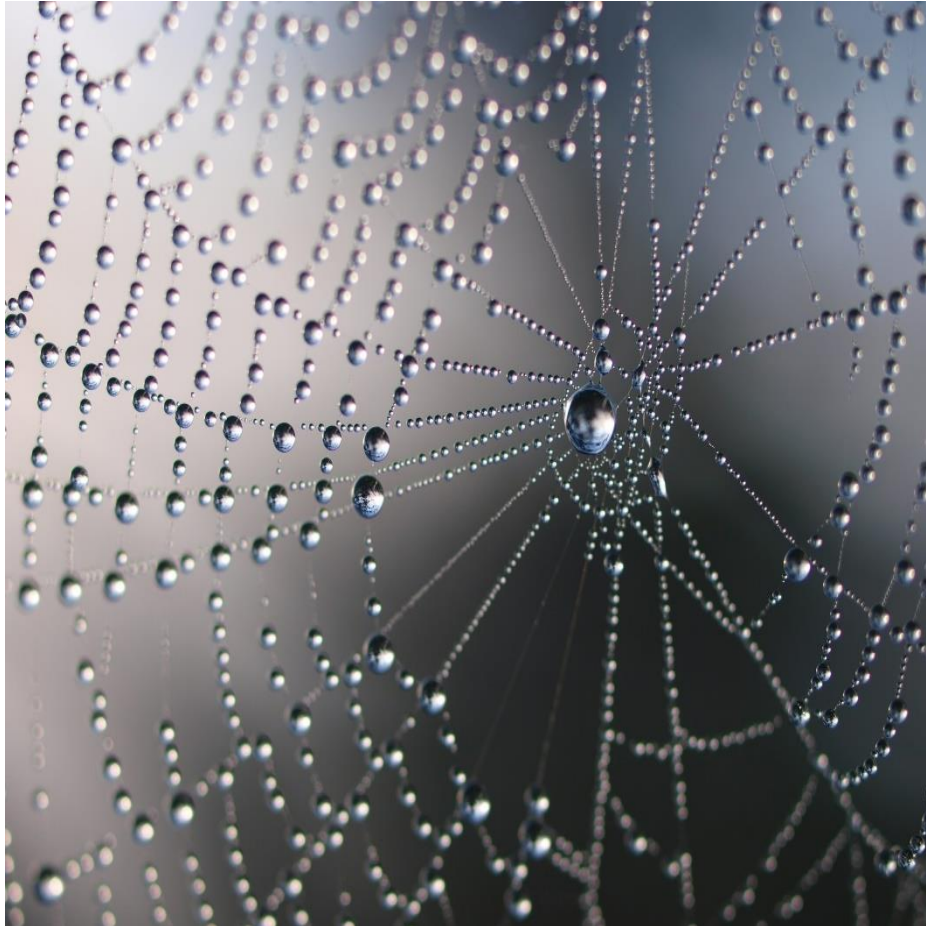
2019

2019–21 state budget included eight new positions for counties and one new position for tribes.

2021

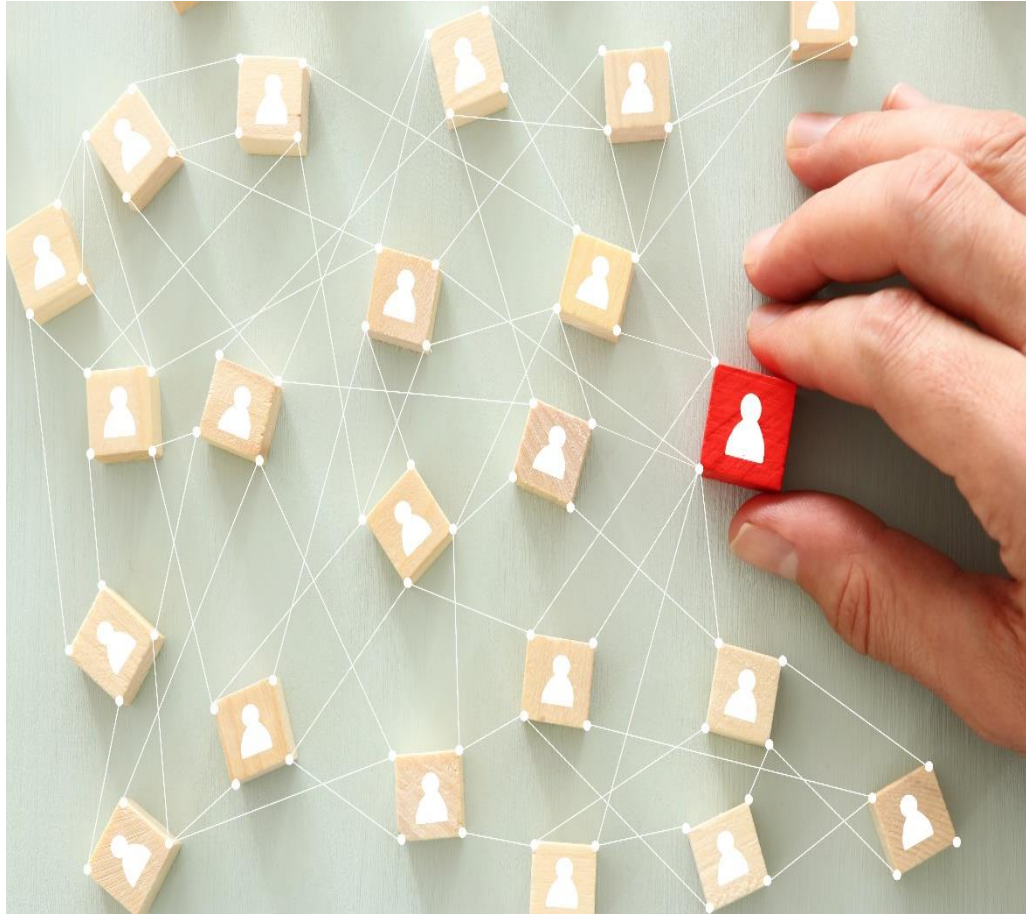
2021–2023 state budget included funding for the program to expand statewide.

DCS Program Pillars



Three pillars
create a web of
support

Dementia Capability



Dementia Capable Agency

- Staff are trained to recognize and respond to symptoms of dementia.
- Dementia-specific services and resources are available.
- Memory screening program is provided by staff.

Memory Screening in the Community

- Memory screening reduces stigma by normalizing dementia as a health condition.
- Early detection empowers decision-making.
- Information is provided to facilitate understanding of normal aging and symptoms of dementia.
- Options for support and assistance for the person and family are discussed.

Dementia-Friendly Communities



Dementia-Friendly Communities

- Catalyze interest from local communities.
- Find local champions to lead the effort.
- Develop local dementia coalitions.
- Train businesses and organizations to be dementia friendly.

Dementia-Friendly Communities

- Provide opportunities for social engagement such as memory cafes.
- Train other local agencies to be dementia friendly.
- Educate the public through outreach at community events.

Individuals and Families



Individuals and Families

- Evidence-based programs
- Evidence-informed programs
- Family and individual meetings

Questions for Attendees

- *Do you have a role similar to the DCS in your states? If yes, please share your answer and any links in the chat.*
- *Do your community health workers work with older adults? If so, what do they include regarding dementia and family caregiving?*

Dementia Support Across the Lifespan



County-Based Program



Wisconsin
Department of
Health Services'
relationship with
the program staff

Wisconsin Aging and Disability Resource Centers



DCS in Action



Lessons Learned

- Framework must be flexible.
- Three pillars work together.
- People want memory screening.
- Volunteer coalitions extend reach.
- Tribal programs are the same, and different.
- Family caregivers use the program the most.

Impact

- The program is still evolving.
- Evaluation is needed.
- The program is the backbone that sustains many activities.

Questions?

Kristen Felten, Dementia Specialist, Office on Aging
kristen.felten@dhs.wisconsin.gov

Wisconsin Dementia Care Specialist Program Resources

Kristen Felten, Dementia Specialist, BOLD Grant Director, Wisconsin Department of Health Services

kristen.felten@dhs.wisconsin.gov

Kathleen Smith, BOLD Grant Manager, Wisconsin Alzheimer's Institute and Wisconsin Department of Health Services

kathleen.smith@dhs.wisconsin.gov

Dementia Care Specialist Resources

<https://www.dhs.wisconsin.gov/adrc/dcs-resource.htm>

Memory Screening in the Community Manual

<https://www.dhs.wisconsin.gov/publications/p01622noappendices.pdf>

Wisconsin Online Family Caregiver Training

<https://www.dhs.wisconsin.gov/dementia/families.htm>

Wisconsin Dementia Care Specialist Program Resources

Dementia Care Specialist Webinar Series for People Living with Dementia and Their Caregivers

<https://www.dhs.wisconsin.gov/adrc/dementia-care-specialist-program.htm>

Building a Support Network

Care Transitions

Driving

Family Conflict and Changes in Social Support

Grief

Incontinence Management

Intimacy and Relationship Changes

Non-Pharmacological Approaches – Part One

Non-Pharmacological Approaches – Part Two

Palliative Care

Safety Planning

Social Isolation

Wisconsin Dementia Care Specialist Program Resources

Wisconsin Healthy Brain Initiative: A Toolkit for Building Dementia-Friendly Communities

<https://www.dhs.wisconsin.gov/publications/p01000.pdf>

Dementia-Friendly Libraries: Best Practice Guide

<https://wai.wisc.edu/wdrn/best-practice-guides/>

Dementia-Friendly Coalition in Wisconsin: Best Practice Guide

<https://wai.wisc.edu/wdrn/best-practice-guides/>

Brain Health Curriculum for Middle and High School Students

A skill-based curriculum designed for health or social studies teachers to teach in 8 to 50-minute segments. Scroll down to “Advocating for Brain Health Skills Based Unit”

<https://dpi.wi.gov/sspw/health-education>

Q&A

Please, submit your questions in the Q&A Zoom feature!



Connect with us!

Visit us online at <https://bolddementiacaregiving.org> to....

- ✓ Find today's slides and recording.
- ✓ Request Technical Assistance to support your public health work in dementia caregiving.
- ✓ Access resources and materials.
- ✓ Stay up to date with PHCOE-DC activities.



Follow us on Twitter  @PHCOE_DC



Thank you for joining us today!

Please, take a moment to complete our evaluation form at the end of this presentation.

