

Successful Public Health Approaches in Dementia Caregiving: *Tennessee*

A Virtual Roundtable Series

September 8th, 2023



Welcome from...

Maya Koffski, B.S.

Center Support Staff,

BOLD Public Health Center of Excellence on Dementia Caregiving (PHCOE-DC)

Center for Healthy Aging and Innovation (CHAI)

University of Minnesota




Land acknowledgement


The University of Minnesota Twin Cities is located on traditional, ancestral, and contemporary lands of Indigenous people. We acknowledge with gratitude the Land itself and the People. We take to heart and commit through action to learn and honor the traditional cultural Dakota Values: Courage, Wisdom, Respect and Generosity.




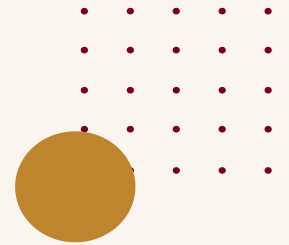
The BOLD Public Health Center of Excellence on Dementia Caregiving (PHCOE-DC)

Designed to support state, tribal and local public health agencies nationwide in developing their dementia caregiving-focused programs and initiatives, by...

 Improving access to evidence-based programs and best practices.

 Facilitating connections and collaboration among public health agencies and a wide range of service organizations.

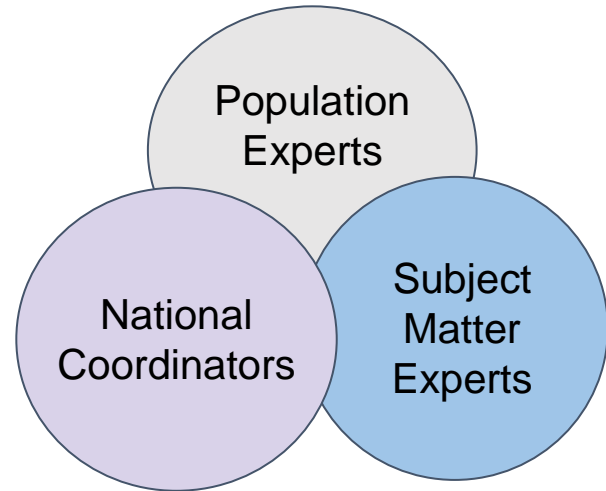
 Providing technical assistance for identifying, selecting, and implementing effective public health interventions and strategies.



HBI Collaborative

Multi-component approach to fully integrate dementia, cognitive health and caregiving into public health practice

HBI Collaborative



Find us online

- About the HBI Collaborative
- Participating Members
- Contact Information

hbicollaborative.org



hbicollaborative.org



**HEALTHYBRAIN
INITIATIVE**
Collaborative

THE **NEW** HBI ROAD MAP IS NOW AVAILABLE ▶

- Expert-developed guidebook for **state and local public health practitioners**
- Flexible menu of **24 readymade actions** to advance health equity, increase community partnerships, and track progress
- Life course approach to maximize impact



alz.org/HBIRoadMap

cdc.gov/aging



Save the Date!

Partnering with Community Health Workers to Support Dementia Caregivers: Opportunities for Public Health

Community Health Workers (CHW) are critical liaisons between healthcare, social and community services, and are effective in improving chronic disease outcomes for older adults in culturally diverse communities. Yet, they have been underutilized in dementia-related efforts. In this session we will learn about dementia-specific training for CHWs, their role in supporting family caregivers of people living with dementia, and share ideas for how public health agencies can partner with CHW programs in their caregiving initiatives.

September 12th, 2023 | 11:30am-1:00pmET | Zoom



Register at the following link or scan
<https://bit.ly/CHWsandDementiaCaregiving>



Shelby Rowell

Senior Analyst,
Population Health and Innovation
The Association of State and Territorial
Health Officials



**Kerstin M. Reinschmidt,
PhD, MPH**

Associate Professor,
Hudson College of Public Health
Oklahoma University Health Sciences Center



**Prasida Khanal,
BDS, MPH**

State Oral Health Director,
Center for Health Promotion
Minnesota Department of Health



**Michelle Johnston,
MPH**

Program Director,
Dementia Initiatives | Policy Branch
California Department of Aging

Successful Public Health Approaches in Dementia Caregiving: *A Virtual Roundtable Series*

- ✓ **Bi-monthly**, roundtable series for **public health**.
- ✓ We will highlight **the story of one state**.
- ✓ Opportunity for **networking, peer-learning and idea generation**.
- ✓ A **community of practice**, where agencies can share their successes and learnings, and get ideas for action.

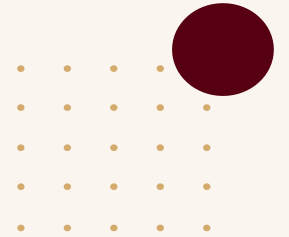
Reminders for the Presentation Session

- Please, **MUTE yourself** and **turn your VIDEO ON** while the panelists are presenting.
- Display **your name and organization in Zoom**.
- **Submit your questions for the speakers into the Q&A feature**. Questions will be addressed at the end of the presentation.
- After the presentation and during the Q&A time, please raise your hand if you wish to speak and **only unmute if you are prompted**.
- Use the **CHAT to share comments, resources, links, and ideas**.
- Feel free to use your reaction buttons!
- The recording, slides and resources will be shared after the event.
- **Please complete the survey at the end of this event** (linked in chat). We greatly appreciate your feedback!

Poll Question

In what capacity are you attending this event?

- BOLD Public Health Agency
- Non-BOLD Public Health Agency
- Community organization/service provider
- Person living with dementia
- Interested caregiver and/or community member
- Care/clinical professional



Welcome our presenters!



Chelsea Ridley, MPH, RN
Dementia Friendly Community Coordinator,
Tennessee Department of Health



Keita Cole, CRS-A/D, CVA
Aging Program Director,
Nutrition & TN Dementia Service Coordinator,
Tennessee Commission on Aging and Disability



THE 10 ESSENTIAL PUBLIC HEALTH SERVICES

To protect and promote the health of all people in all communities

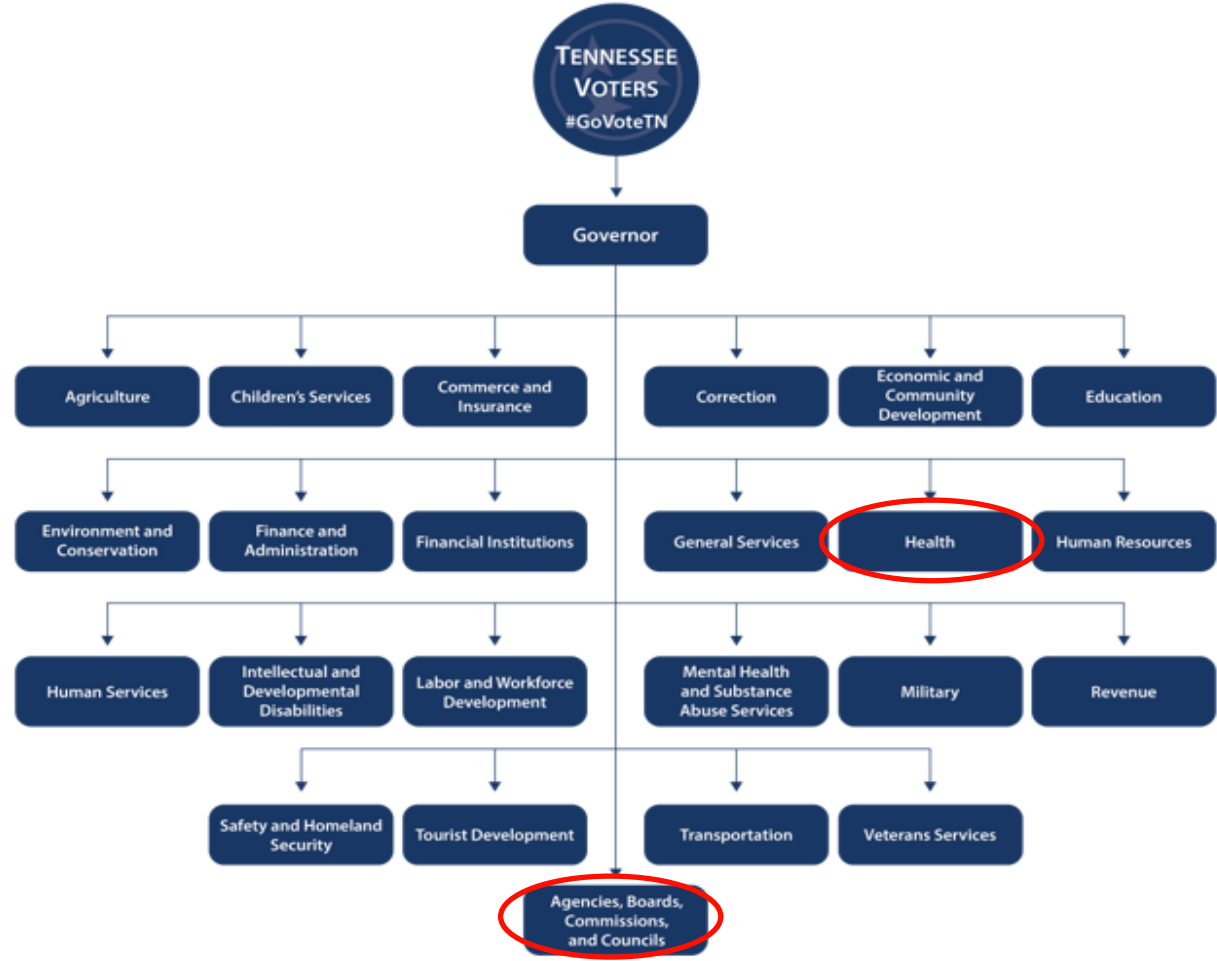
The 10 Essential Public Health Services provide a framework for public health to protect and promote the health of all people in all communities. To achieve optimal health for all, the Essential Public Health Services actively promote policies, systems, and services that enable good health and seek to remove obstacles and systemic and structural barriers, such as poverty, racism, gender discrimination, and other forms of oppression, that have resulted in health inequities. Everyone should have a fair and just opportunity to achieve good health and well-being.





Dementia Caregiving: Tennessee

Tennessee Structure



Area Agencies on Aging and Disabilities & Public Health Regions



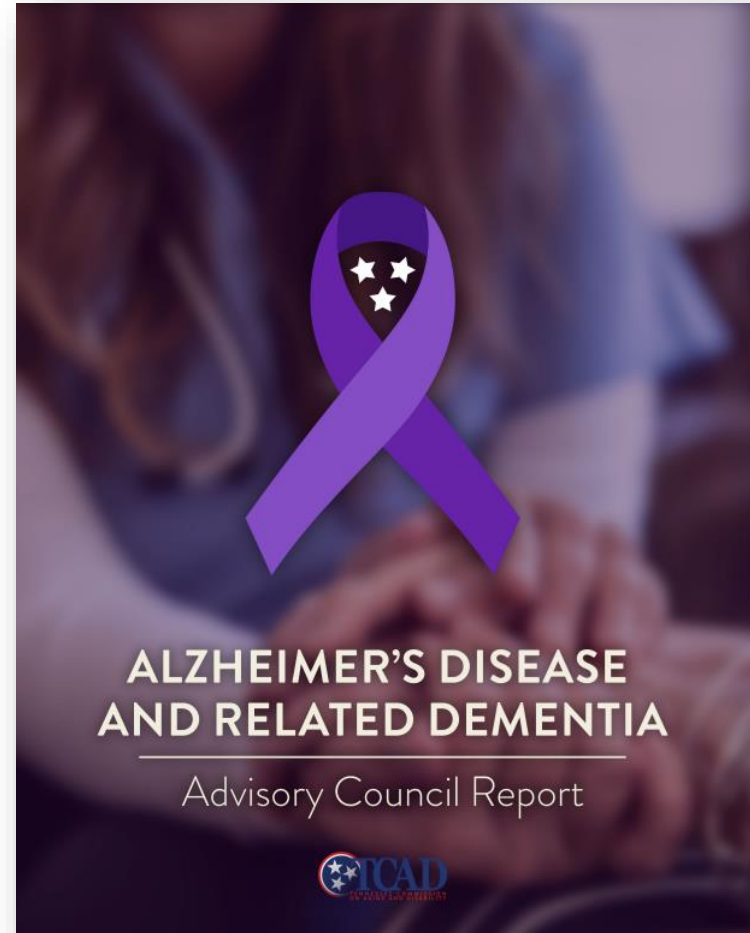
AAAD Regions



Public Health Regions

ADRD Advisory Council

- Created in 2019 by TN General Assembly: Public Chapter 364
- Administratively Attached: Tennessee Commission on Aging and Disability (TCAD)
- 16 members
- Meets quarterly
- Updates the ADRD State Plan each year
- Click here to view the [2023 ADRD State Plan](#)



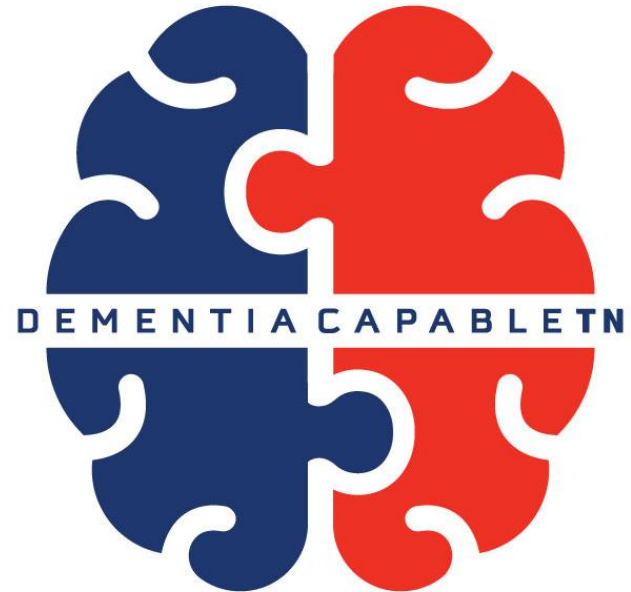
Workforce Development

- **TCAD**

- Dementia Capable Staff Trainings
- Trained 100% of Information & Assistance Staff through Alzheimer's Disease Programs Initiatives Grant
- Brain Health Webinars

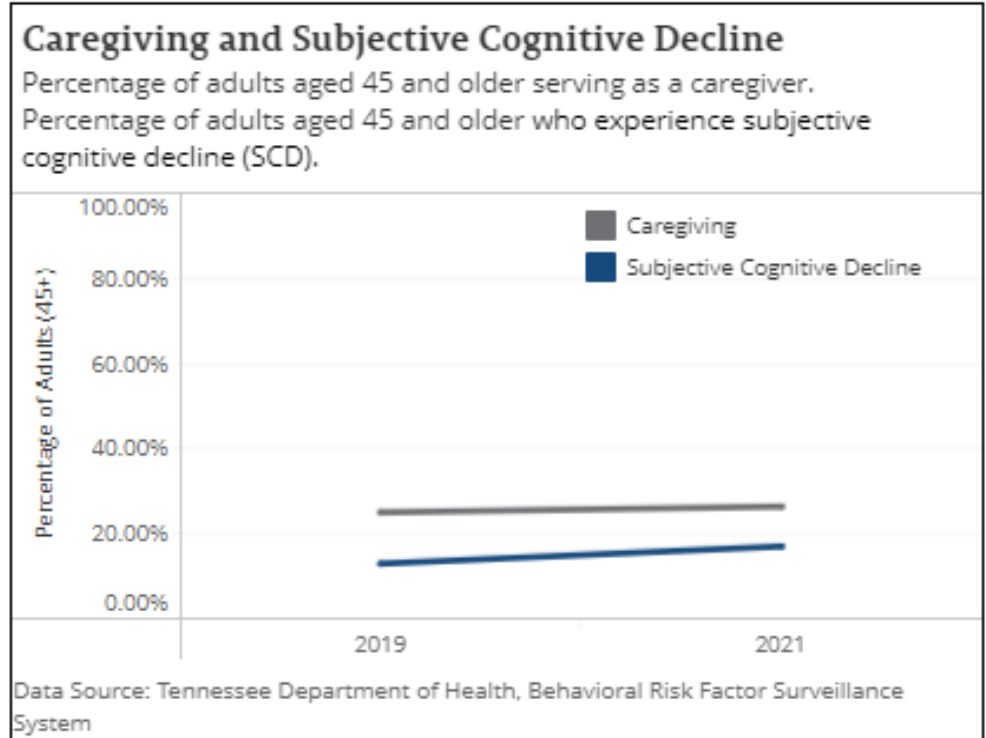
- **TDH**

- Healthcare Provider Trainings
- Establishing LMS System for Public Health Staff
- Basic Brain Health/Dementia as a Public Health issue for TDH Staff



Data for Action

- **BRFSS modules:** Caregiving and Cognitive Decline
- **TDH & TCAD County Profiles**
 - Chronic Disease (ADRD)
 - Aging Statistics
 - Costs
- Sharing of data for grant development and program advancement



Community Engagement and Partnerships

- **TDH & TCAD**

- University of Tennessee at Chattanooga School of Nursing Faith Project
- Palliative Care and Quality of Life Advisory Council
- Alzheimer's Association TN Chapter
- Alzheimer's Tennessee
- Tennessee Respite Coalition
- Public Chapter 221 (2023): Colonel Thomas G. Bowden



Public Health Lessons Learned

- Establish common goals & identify mission alignment;
- Work to gain buy-in from internal public health staff (Trust for America's Health 6C's Framework);
- Seek funding that complements programs occurring in other state agencies;
- Communicate regularly!



Leveraging Resources

- Share resources (handouts, data)
- Grant Collaboration
- Network utilization
- **Contact Us!**
 - Chelsea Ridley (Chelsea.Ridley@tn.gov)
 - Keita Cole (Keita.Cole@tn.gov)



Q&A

Please, submit your questions in the Q&A Zoom feature!



Connect with us!

Visit us online at <https://bolddementiacaregiving.org> to....

- ✓ Find today's slides and recording.
- ✓ Request Technical Assistance to support your public health work in dementia caregiving.
- ✓ Access resources and materials.
- ✓ Stay up to date with PHCOE-DC activities.



Follow us on Twitter  @PHCOE_DC



Thank you for joining us today!

Please, take a moment to complete our evaluation form at the end of this presentation.

