



MANAGED BY THE AMERICAN GERIATRICS SOCIETY



BOLD
PUBLIC HEALTH
CENTER OF EXCELLENCE
ON DEMENTIA
CAREGIVING

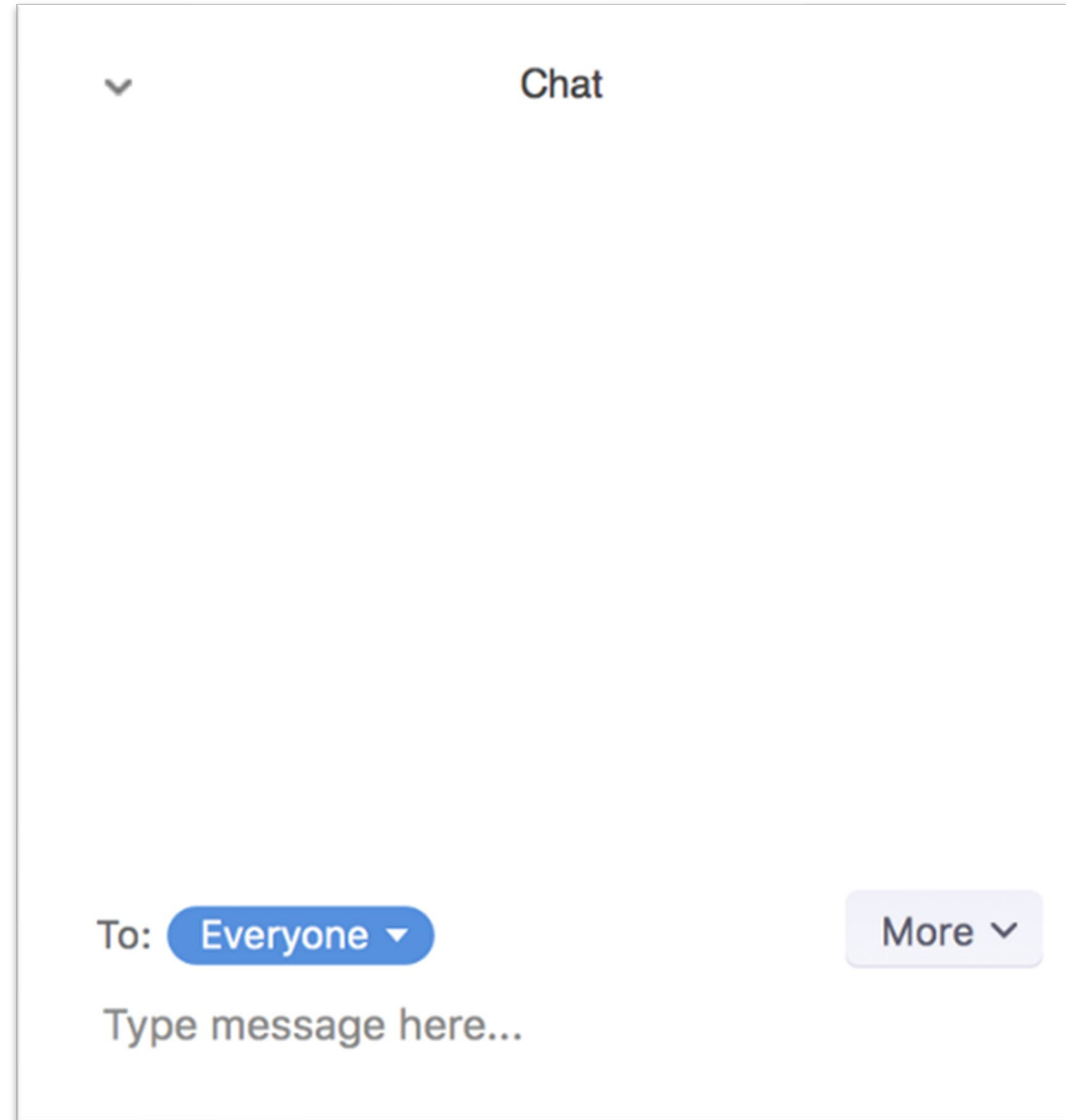
GWEPs Partnering with Departments of Public Health on Dementia Education

*September 24, 2024
3:00pm – 4:00pm ET*

Welcome!

Chat in your:

- Name
- Role
- Organization
- Location



Today's Agenda

Time (ET)	Presentation/Speaker
3:00pm	Overview of Geriatrics Workforce Enhancement Programs (GWEPs) <ul style="list-style-type: none">Nina Tumosa, PhD, Health Resources and Services Administration (HRSA)
3:05pm	CDC Interest in Building Connections Between Community-Based Organizations, Primary Care, and Public Health <ul style="list-style-type: none">Heidi L. Holt, MPA, Centers for Disease Control and Prevention (CDC)
3:15pm	Oklahoma GWEP & BOLD Oklahoma Healthy Brain Initiative <ul style="list-style-type: none">Lee A. Jennings, MD, MSHS, AGSF, University of Oklahoma Health Sciences CenterMorgan Hamilton, MPH, Oklahoma State Department of Health
3:25pm	BOLD National Center at University of Minnesota & The Age-Friendly Care and Education Collection hosted by the Minnesota Northstar GWEP <ul style="list-style-type: none">Joseph E. Gaugler, PhD, University of MinnesotaKristine Talley, PhD, CNP, RN, FGSA, University of Minnesota
3:35pm	NYU BOLD Public Health Center of Excellence on Early Detection of Dementia <ul style="list-style-type: none">Soo Borson, MD, BOLD Center of Excellence on Early Detection of Dementia
3:45pm	Question & Answer Session <ul style="list-style-type: none">Moderator: Jane F. Potter, MD, FACP, AGSF, University of Nebraska



COHORT 3 Geriatrics Workforce Enhancement Programs and Dementia Education

September 24, 2024

Nina Tumosa
Senior Public Health Analyst-Geriatrics,
Division of Medicine and Dentistry
Bureau of Health Workforce (BHW)

Vision: Healthy Communities, Healthy People

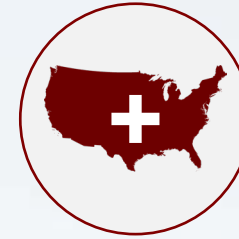


Agenda

- 1 Welcome
- 2 BHW Mission
- 3 Geriatrics Workforce
Enhancement Program
Dementia Programming
- 4 Questions



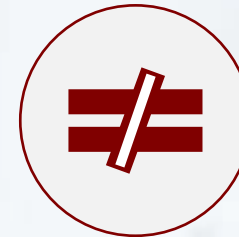
The U.S. Health Workforce



**GROWING
DEMAND**



**SHRINKING
SUPPLY**



**UNEQUAL
DISTRIBUTION**

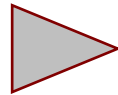
Bureau of Health Workforce

MISSION Improves the health of underserved populations by

- ▶ strengthening the health workforce
- ▶ connecting skilled professionals to communities in need



EDUCATION



TRAINING



SERVICE



Introduction to the Geriatrics Workforce Enhancement Program (GWEP)

- **GWEP Purpose:** To educate and train the health care and supportive care workforces to care for older adults by collaborating with community partners.
- **GWEP Goal:** To educate and train the primary care and geriatrics workforces and other appropriate specialties to provide age-friendly and dementia-friendly care for older adults in integrated geriatrics and primary care sites/delivery systems
- **Dementia Training Requirement:** At least \$230,000 used to educate and train the health care and supportive care workforces in ADRD in TTOUR primary care sites and delivery systems and provide financial support to trainees in these sites.



2024 GWEP Cohort 3 Geographic Distribution

- 37 states
- Five states have two GWEPs each:
 - CA, NY, PA, FL, and TX
- 32 states with one GWEP each:
 - AL, AR, AZ, CT, DE, GA, HI, IA, IL, IN, KS, KY, LA, MD, ME, MI, MN, MO, NC, ND, NH, NJ, NV, OH, OK, OR, RI, TN, VA, WA, WI, and WY



Demographics of Cohort 3 GWEPs

- Cohort 3 HRSA-funded Geriatrics Workforce Enhancement Programs are in 37 states
- The newly funded Cohort 3 of 42 awardees consists of
 - 11 Schools of Nursing
 - 23 Schools of Medicine
 - 3 Clinical Social Work graduate programs
 - 2 clinics (including 1 FQHC)
 - 1 School of Allied Health
 - 1 School of Public Health
 - 1 Clinical Psychology graduate program



Examples of ADRD Projects of Cohort 3 GWEPs

1. Oklahoma Dementia Care Network (based in Schools of Medicine and Public Health), will spend 100% of its budget on ADRD activities.
 - a. Partnering with 2 tribal health clinics and 16 rural sites, 10 of which are in primary care health professions shortage areas (HPSAs) throughout OK.
 - b. OK has an established Community Health Worker/Community Health Representative (CHW/CHR) training in dementia program.

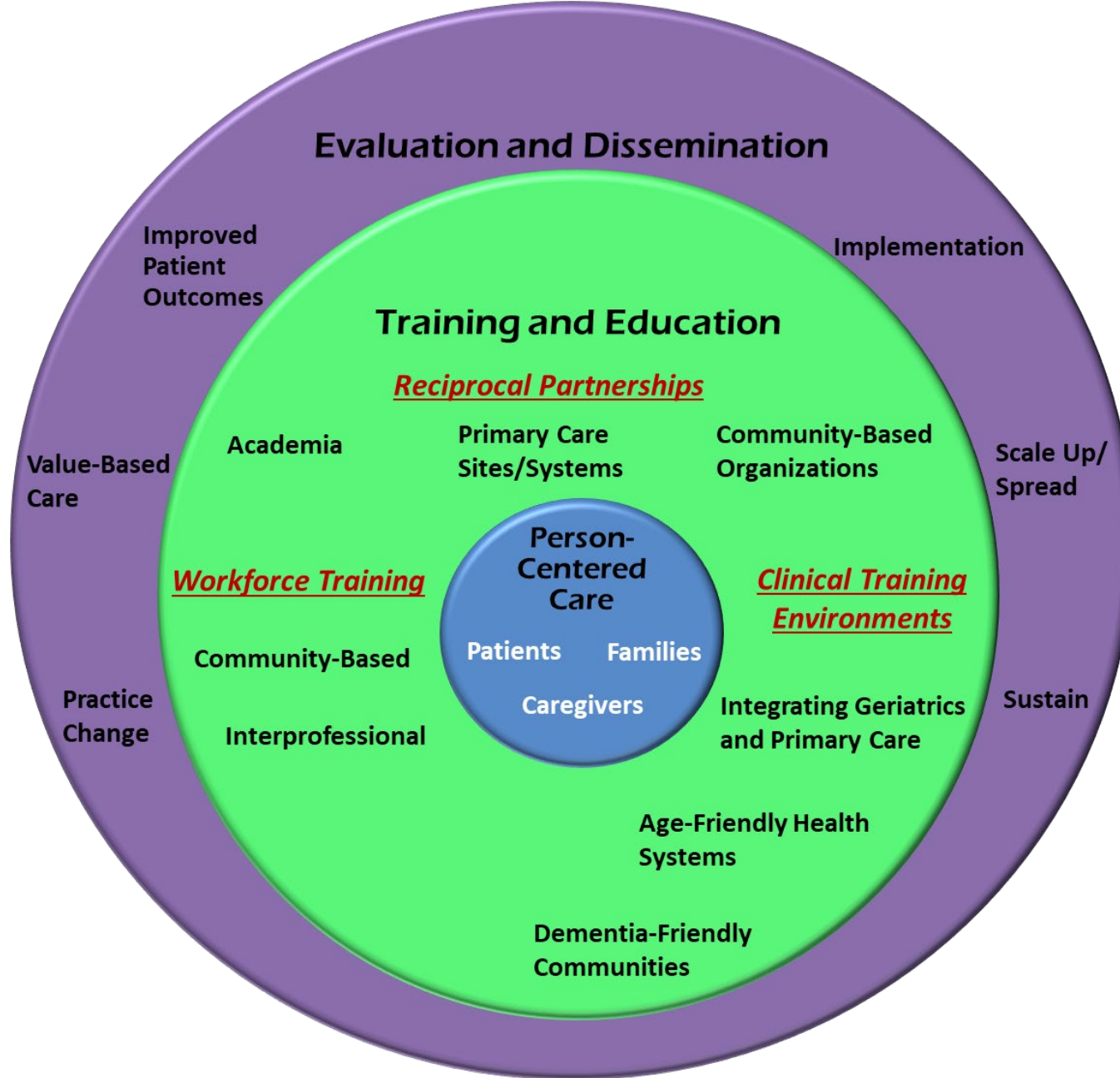
2. NYU GWEP (School of Nursing) will use $\frac{1}{4}$ of its overall budget for its ADRD activities.
 - a. They are partnering with 8 primary care practices in HPSAs in the Bronx
 - b. Their activities include providing ADRD training for
 - i. CNAs, CHWs, home health aides , and nursing home administrators.
 - ii. FQHCs.
 - iii. Developing referral loops/ workflows in primary care sites for persons with positive cognition screens.



Final Example of ADRD Projects of Cohort 3 GWEPs

3. University of Iowa School of Public Health GWEP will spend 1/3 of its budget on ADRD activities.
- a. Partnering with 5 rural sites (one of which is a HPSA, and another is a county department of PH)
 - b. ADRD activities include:
 - Advancing Dementia Friendly Iowa.
 - Community-based education partnering with faith-based organizations.
 - An emphasis on Veterans dementia care.
 - Empowering CNAs to become geriatrics specialists.
 - Simulation training for care givers.





Questions



Contact Us

Nina Tumosa

Senior Public Health Analyst – Geriatrics

Bureau of Health Workforce (BHW)

Health Resources and Services Administration (HRSA)

Phone: 802-333-3532

Email: ntumosa@hrsa.gov

Website: www.bhw.hrsa.gov



Connect with HRSA

Learn more about our agency at:

www.HRSA.gov



[Sign up for the HRSA eNews](#)

FOLLOW US:



View current
HRSA openings:



Partnering with Public Health

Heidi L. Holt, MPA

Healthy Aging Branch

Division of Population Health

CDC/NCCDPHP

September 24, 2024



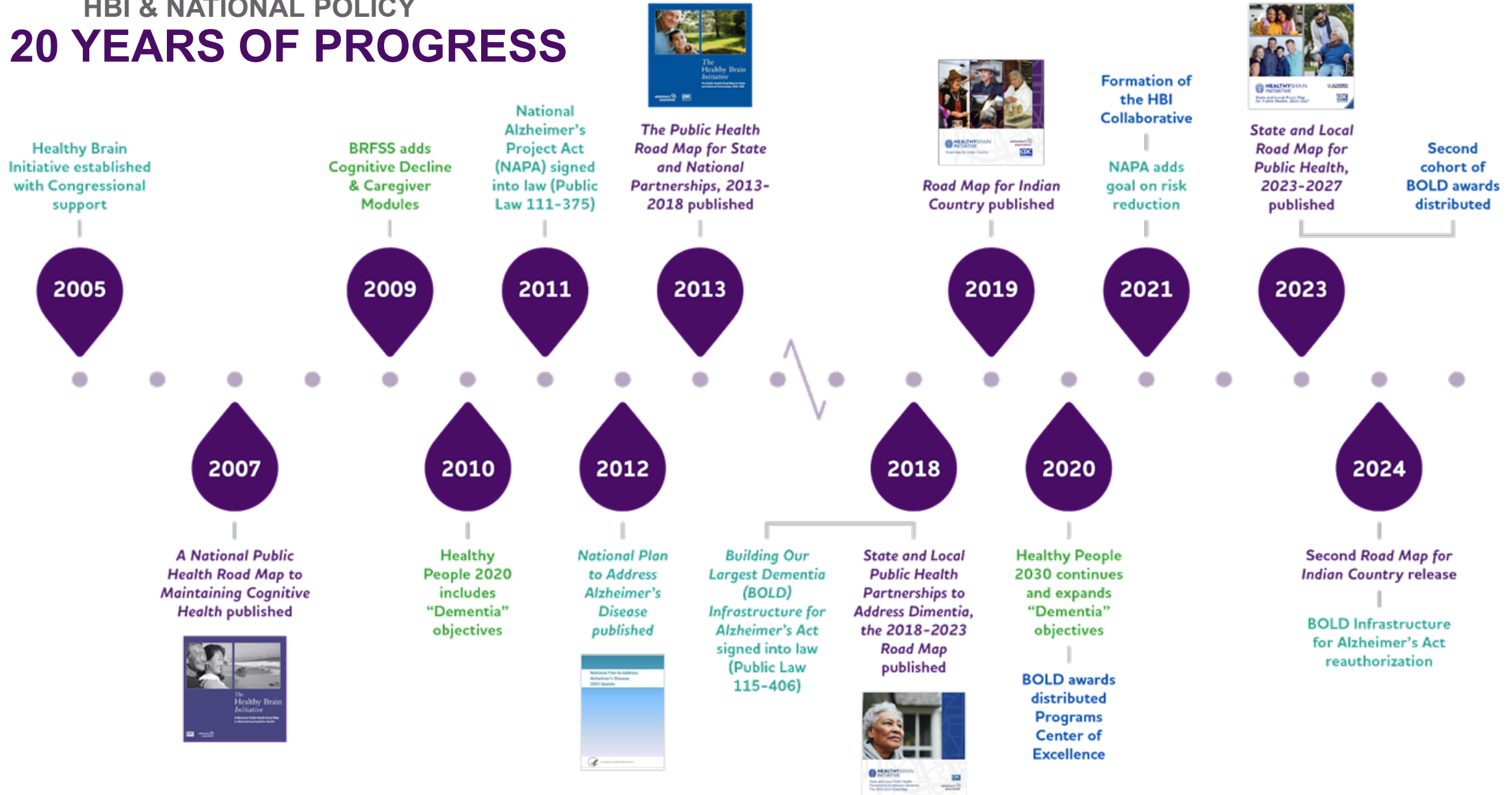
Dementia Workforce Education

- Most PCPs (55%)* report that there are not enough dementia specialists
- Workforce training is needed
- Public health departments can work with you



CDC Efforts

HBI & NATIONAL POLICY 20 YEARS OF PROGRESS



Road Maps

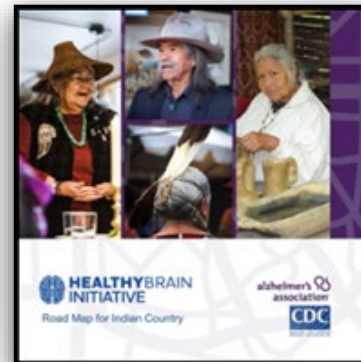
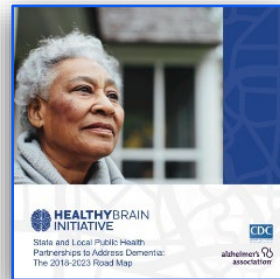
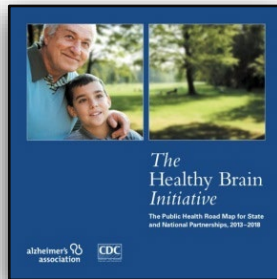
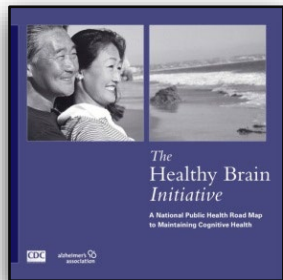
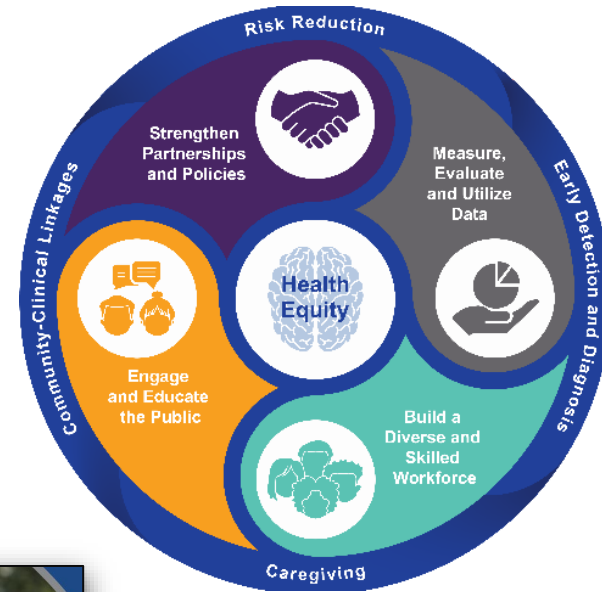
CDC

Data

Federal Interventions

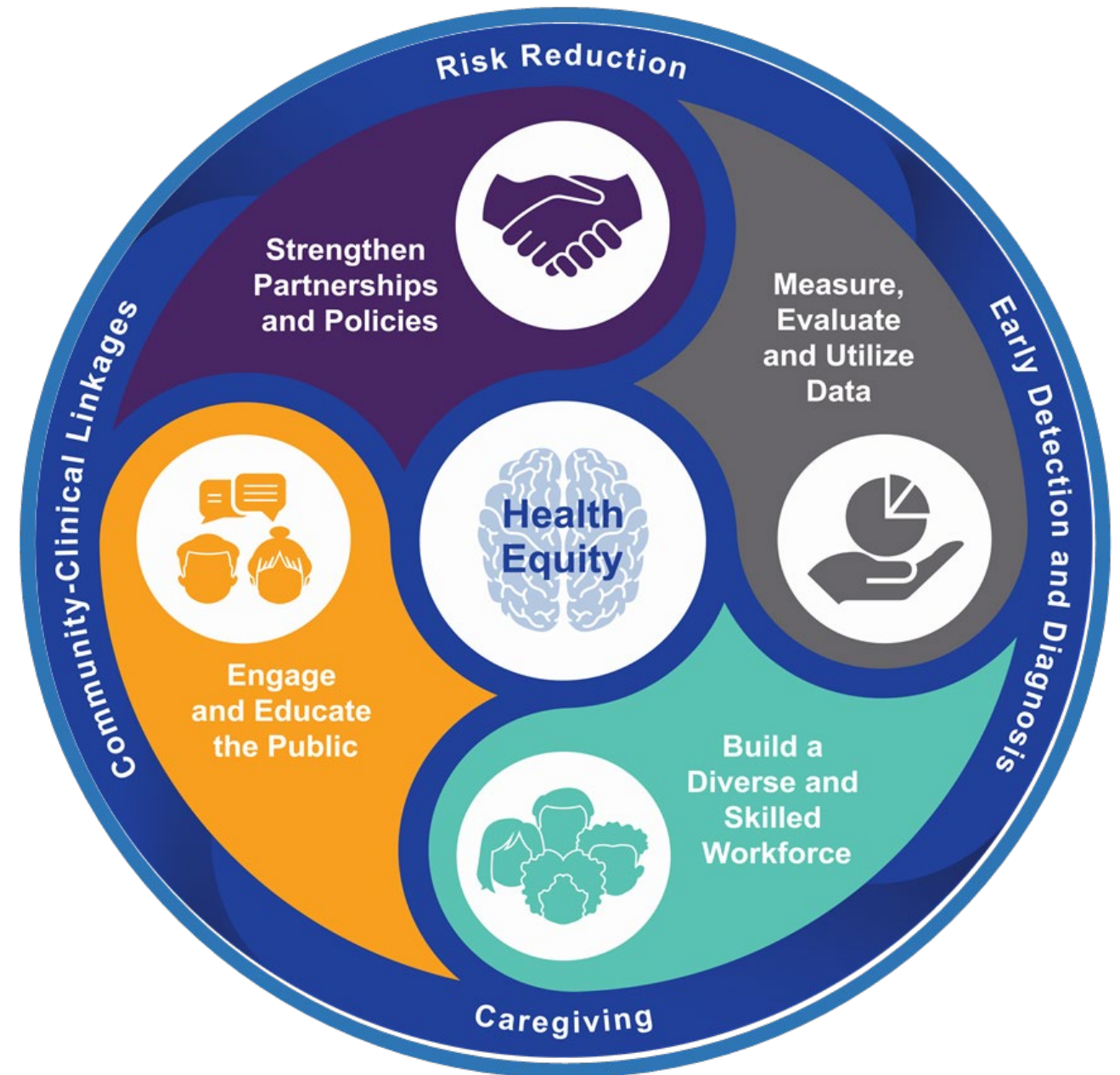
THE HBI ROAD MAP SERIES

Public health strategies to promote brain health, address dementia, and help support caregivers



<https://www.cdc.gov/aging-programs/php/nhbi/roadmap.html>

The Action Framework





HEALTHYBRAIN INITIATIVE

Advance brain health as a central part of public health practice (nationally)



BOLD is designed to **create a strong public health infrastructure** for dementia and dementia caregiving

Long-Term Goals

- 1) Improve conversations about cognitive health between patients and providers.
- 2) Increase diagnosis and awareness.
- 3) Reduce preventable hospitalizations.
- 4) Increase utilization of Medicare benefits.

<https://www.cdc.gov/aging-programs/index.html>

OPPORTUNITIES FOR PUBLIC HEALTH INTERVENTION ACROSS THE DEMENTIA LIFE COURSE

RISK REDUCTION | Primary Prevention



EARLY DETECTION AND DIAGNOSIS | Secondary Prevention



SAFETY AND QUALITY OF CARE | Tertiary Prevention



Healthy Cognitive Functioning

Pre-Symptomatic
Brain Changes

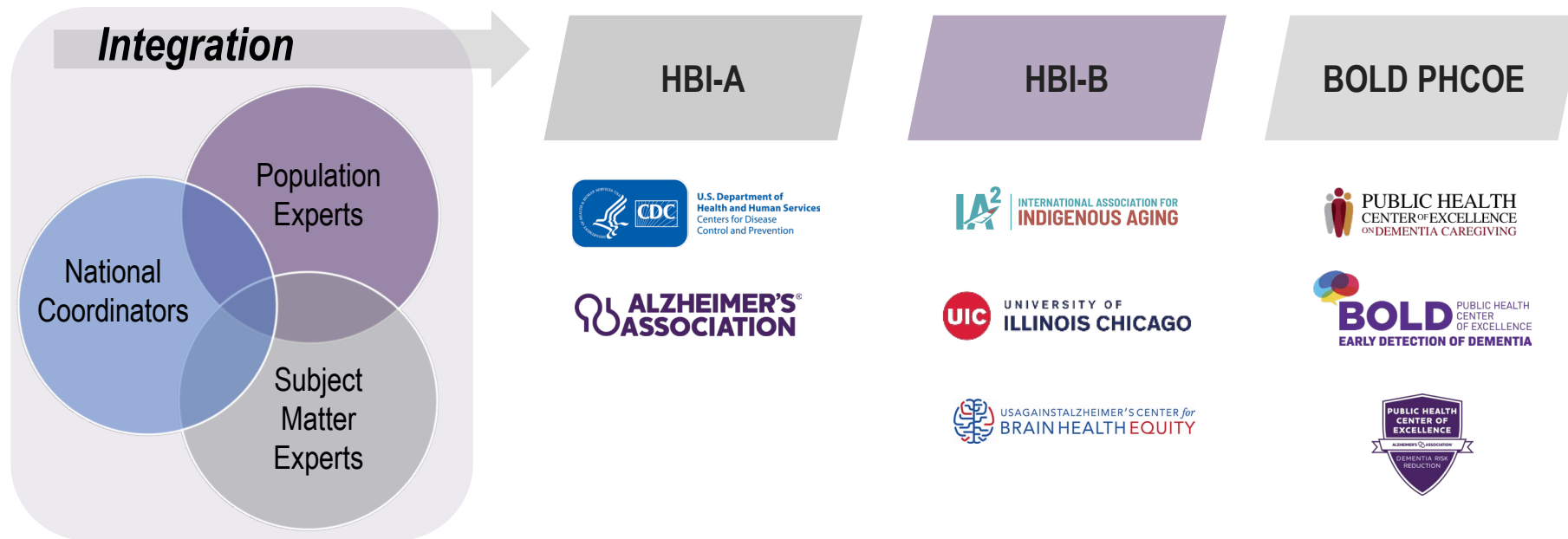
Mild Cognitive
Impairment

Mild
Dementia

Moderate
Dementia

Severe
Dementia

Healthy Brain Initiative



COMPONENTS OF BOLD



<https://www.cdc.gov/aging-programs/php/bold/index.html>



BOLD Programs

2023-2028

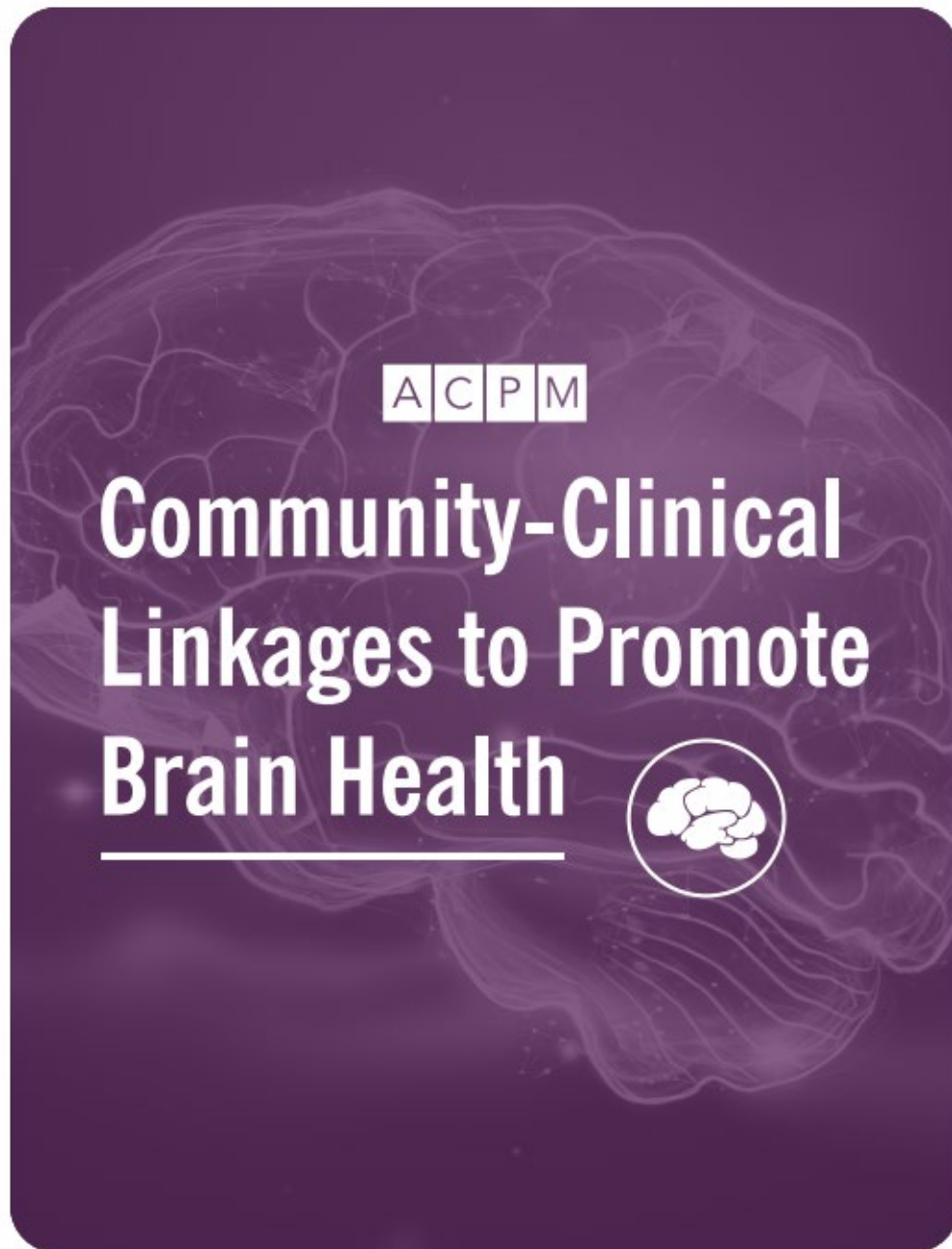
Component 1

- Alabama
- Allegheny County, PA
- Cameron County, TX
- Kansas
- Kentucky
- Maricopa County, AZ
- Marion County, IN
- Michigan
- Montana
- New York City, NY
- Oregon
- Puerto Rico
- South Dakota

Component 2

- Alaska
- Boston, MA
- California
- Colorado
- Connecticut
- DC
- Georgia
- Hawaii
- Illinois
- Idaho
- Iowa
- Los Angeles County, CA
- Louisiana
- Maine
- Maryland
- Minnesota
- Mississippi
- Missouri
- Nevada
- New York
- Northwest Portland Area Indian Health Board
- Oklahoma
- Rhode Island
- South Carolina
- Tennessee
- Texas
- Vermont
- Virginia
- Washington
- Wisconsin

PRODUCT EXAMPLES



***NEW* Toolkit: Community-Clinical Linkages to Promote Brain Health**

[Brain-Health-Kit-v10.cdr \(acpm.org\)](https://www.acpm.org/brain-health-kit-v10.cdr)

- Designed for preventive medicine providers to implement and inform their practice around improving brain health within health systems.
- This tool aims to activate preventive medicine physicians and educate patients on ADRD, reduce risk factors related to dementia, and improve the brain health and cognitive functions of populations by leveraging clinical-community linkages through an equity-centered approach.

Improving Brain Health

A Practical Review of Dementia Risk Reduction Strategies

ACPM

American College of Preventive Medicine



physicians dedicated to prevention

NEW Launch of ACPM Brain Health Courses

- [Improving Brain Health: A Practical Review of Dementia Risk Reduction Strategies](#)

Lifestyle Medicine and Brain Health

Heart Healthy is Brain Healthy: Cognitive Decline and Dementia Risk Reduction through Blood Pressure Control

John Barrett, MD, MPH, MS, FACPM, FAAFP, FACOEM

Medical & Deputy Director, War Related Illness & Injury Study Center
Veterans Affairs Medical Center, Washington DC
Associate Professor, Preventive Medicine and Family Medicine
Uniformed Services University

ACPM

American College of Preventive Medicine

acpm.org



physicians dedicated to prevention

- [Heart Healthy is Brain Healthy: Cognitive Decline and Dementia Risk Reduction through Blood Pressure Control](#)



The Healthy Brain Resource Center (HBRC) is a one-stop, easy-to-navigate website that helps users find credible information and materials to support implementing the Healthy Brain Initiative Road Map.

The HBRC currently features over 400 publicly available resources.

- CDC-verified resources and information all in one location.
- Robust search functions to quickly access information.
- A user manual and orientation video provide guidance on how to use the HBRC.
- Rolling content submissions accepted.
- Visit the HBRC at

<https://www.cdc.gov/aging-programs/php/resource-center/index.html>

CALL TO ACTION



PARTNER WITH YOUR BOLD PROGRAM OR HEALTH DEPARTMENT

INCORPORATE DEMENTIA AND CAREGIVING EDUCATION

VISIT <https://www.cdc.gov/healthy-aging> FOR MORE INFORMATION AND RESOURCES

CDC News & Updates

Subscribe for free and stay up-to-date with the latest information by subscribing to CDC journals, publications, articles, and more.

! Please enter a valid email address. If you do not have an account, sign up now to browse and subscribe to our list of subscriptions.

Email Address

Please enter your email address. This email address will be used to manage your subscriptions and subscriber preferences.

Email Address

Register

Newsletter Subscription



Closing Slide / Disclaimer

Heidi L. Holt, MPA
hym3@cdc.gov

For more information, contact CDC
1-800-CDC-INFO (232-4636)
TTY: 1-888-232-6348 [cdc.gov](https://www.cdc.gov)
Follow us on X (Twitter) [@CDCgov](https://twitter.com/CDCgov) & [@CDCEnvironment](https://twitter.com/CDCEnvironment)

The findings and conclusions in this presentation are those of the authors and do not necessarily represent the official position of the U. S. Centers for Disease Control and Prevention.





Oklahoma BOLD GWEP Collaboration

Lee A. Jennings, MD, MSHS
Associate Professor and Chief
Section of Geriatrics and Palliative Medicine
University of Oklahoma Health Sciences
Center

Morgan Hamilton, MPH
Healthy Brain, Heart & Diabetes Program
Manager
Oklahoma State Department of Health
Chronic Disease Prevention Service

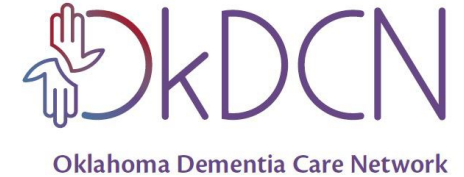


BOLD- Awardee Oklahoma Healthy Brain Initiative



- **Building Our Largest Dementia Infrastructure**
 - BOLD Infrastructure for Alzheimer's Act – passed 12/31/2018
- **Component 1: Infrastructure**
 - September 30, 2020- September 29, 2023
 - Created the Oklahoma Healthy Brain Initiative Coalition
 - Updated and Published OK Alzheimer's and Related Dementias State Plan 2023-2027
- **Component 2: Implementation**
 - September 30, 2023- September 29, 2028
 - Currently in Year 1

OK GWEP—Oklahoma Dementia Care Network



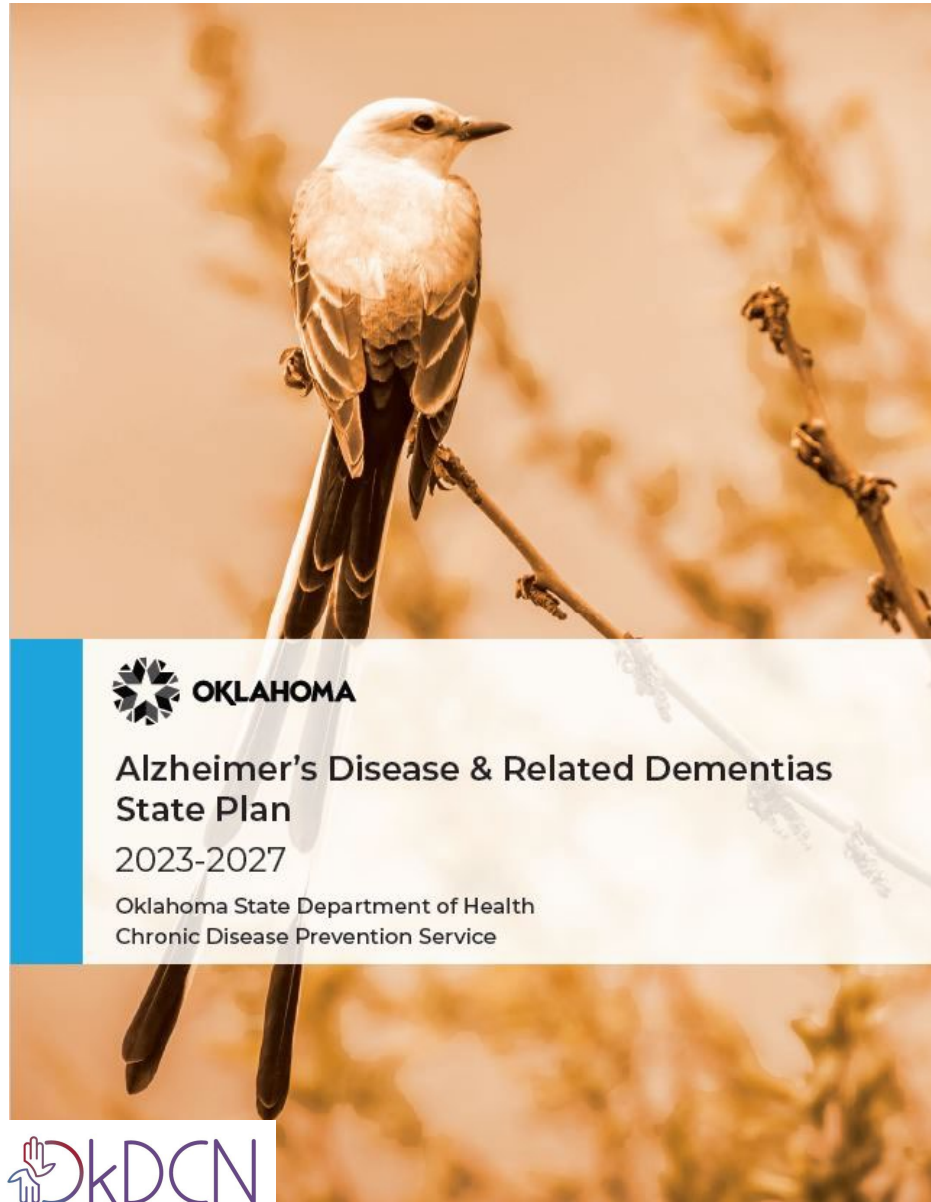
- University of Oklahoma’s Geriatric Workforce Enhancement Program (GWEP)
 - Awarded by HRSA 2019 and 2024
 - Created the Oklahoma Dementia Care Network (77+ members)
 - **Entirely focused on dementia workforce development**
 - Age- and dementia-friendly nursing homes and primary care
 - Career Technology Centers Train-the-Trainer model for CNA/LPN educators
 - ECHO (Age-Friendly Community Resources, Age-Friendly Nursing Home)
 - Community Health Worker training in dementia
 - Statewide family caregiver training in dementia
 - Partnerships with Tribal Nations, FQHC, rural nursing homes, Colleges of Nursing, Public Health, Social Work, OK Foundation for Medical Quality, State Dept of Health





- **OkDCN Chairs the Workforce Development Workgroup**
 - **Meets bimonthly**
 - **Created goals and objectives for the ADRD State Plan**
 - **Assisting with the Implementation Plan and success of the plan**
- **To Learn more and/or to join visit: www.Oklahoma.gov/health/ohbi**

Alzheimer's Disease and Related Dementias State Plan 2023-2027



Workforce Development

By 2025, increase healthcare workers in-service opportunities throughout the state by 10%, with a 5% increase each year after.

Organizations responsible: Oklahoma Dementia Care Network, Oklahoma State Department of Health

- Utilize the curriculum and trainings created by the Oklahoma Dementia Care Network and Project Echo for CNAs and CMAs across the state.
- Establish/maintain 5% of newly graduating CNAs with dementia certification over the next five years.
- Increase the number of current CNAs and CMAs with dementia certification by 5% over the next five years.

By January 2024, provide Alzheimer's Disease and Related Dementias specific certification for Community Health Workers (CHWs) and Community Health Representatives (CHRs).

Organizations responsible: OUHSC Hudson College of Public Health, Oklahoma Dementia Care Network

- Promote and utilize Dr. Reinschmidt's ADRD-specific training for CHWs and CHRs.

By 2025, increase first responders Alzheimer's Disease and Related Dementias training opportunities throughout the state by 5%.

Organizations responsible: Oklahoma Dementia Care Network, OU College of Medicine

- Utilize the curriculum and trainings created by the Oklahoma Dementia Care Network and OU College of Medicine.





Dementia Friendly Oklahoma is an initiative to bring awareness and education across the state to support those living with dementia and their care partners. Oklahoma is a member of the Dementia Friendly America® Network which is a multi-sector, national collaborative on a mission to foster communities that are equipped to support people with dementia and their family and friend care partners by working to become “dementia friendly.”



Host an Educational Presentation today to begin your journey to becoming more **Dementia Friendly!**

Scan the QR code to sign up for a presentation.

First Responder Statewide Training

- Statewide approach
- New initiative
- OHBI, OKDCN, Alzheimer's Association OK Chapter



PLEASE JOIN US
FOR A
**FIRST
RESPONDER
ROUNDTABLE**

Join us and share your feedback around dementia training for first responders in Oklahoma.

August 28 | 9 a.m. - 12 p.m.

Metro Tech Springlake Campus
Economic Development Center Room 123

RSVP to HealthyBrain@health.ok.gov.
Unable to attend in person?
RSVP to receive a virtual attendance link!

Innovations in Aging Day

- Annual OK GWEP Conference
- Corresponds with Careers in Aging Month (March)
- Co-hosting this year with OHBI
- Additional speakers
- Additional CEUs
- Targeting a broader audience

JOIN US FOR THE 4TH ANNUAL
Innovation in Aging Day and Abstract Competition

Tuesday, March 26, 2024 12:15 p.m. - 3:30 p.m. | Zoom
Scan or Click to Register



Topic:
"Addressing the Geriatric
5Ms in Primary Care"
Time: 12:15pm - 1:00pm



Heather Bennett Schickedanz, M.D.
Chair, Dept. of Family Medicine, Harbor-
UCLA Medical Center

Dr. Schickedanz oversees a family health center and multiple service lines, including inpatient service, home based care, specialty-primary care, and full spectrum family care including perinatal, pediatric, adolescent, adult, behavioral, mental health and geriatric care.

You are invited to attend the 4th Annual Innovations in Aging Day, hosted by the Oklahoma Dementia Care Network within the OU College of Medicine Section of Geriatrics & Palliative Medicine and the Hudson College of Public Health. The event will be held virtually from 12:15 p.m. to 3:30 p.m. on Tuesday, March 26, 2024. A Zoom link will be sent upon registration. During the day, you can expect: **Informative Presentations and Winning Abstract Presentations by OU Health Science Center Scholars**

OUHSC Abstract Competition
Abstract category competition for best innovations in: **Clinical Care/Quality Improvement; Research; Health Professions Education; Community-Based Interventions Related to Aging.** Monetary prizes (\$250) for 3 best abstracts plus invitation to present at conference.

Deadline for submissions is **Friday, March 8, 2024**

Scan or Click to Submit



Topic:
"Integrated Memory Care:
All-Inclusive Dementia
Care"
Time: 1:00pm - 1:50pm



Dr. Carolyn Clevenger, DNP, RN
Professor, Integrated Memory Care Clinic Director,
School of Nursing, Emory University

Dr. Clevenger, a clinical track professor and gerontological nurse practitioner, is the Associate Dean for Clinical and Community Partnerships at the Nell Hodgson Woodruff School of Nursing, Emory University. She is a nationally recognized educational leader in advanced practice nursing and in geriatrics and gerontology.

Hosted by the Reynolds Section of Geriatrics and Palliative Medicine, Department of Medicine and the Department of Health Promotion Sciences, Hudson College of Public Health in conjunction with the Oklahoma Dementia Care Network. Supported by HRSA award #U1QHP33082.

For more information, please visit:
oklahomadementiacarenetwork.com

This publication was supported by the Health Resources and Services Administration (HRSA) of the U.S. Department of Health and Human Services (HHS). The contents are those of the author(s) and do not necessarily represent the official views of, nor an endorsement, by HRSA, HHS or the U.S. Government.



Project ECHO Special Sessions

Oklahoma Dementia Care Network

Medicare Open Enrollment Up-Dates

Special Presentation 6

Wednesday, October 4, 2023
10:30am to 12:00 am CST
via Zoom



Ray Walker

Divisional Director
Medicare Assistance Program
Oklahoma Insurance Department

The Medicare Open Enrollment Period (OEP), which occurs each year from Oct. 15 to Dec. 7, gives you the chance to review and make changes to your current Medicare coverage. Here's some information to help you prepare for Medicare Open Enrollment and get the most out of your Medicare coverage in 2024.

Join us
Medicare Open Enrollment Updates

There is no cost to join an ECHO session.



Sign up today by visiting www.okdcn.org and selecting the event date. You can also scan or click the QR code below.



For More Information, Please Feel Free to Contact

Sharon: sharon-elder@ouhsc.edu
G-Coty: gcoty-shorter@ouhsc.edu

www.okdcn.org

There is no cost to join an ECHO session. Free NAB credits for nursing home administrator. This program has been approved for Continuing Education for 1.5 total participant hours by NAB/NCERS-Approval 20241003-13-A98972-DL

This publication was supported by the Health Resources and Services Administration (HRSA) of the U.S. Department of Health and Human Services (HHS). The contents are those of the author(s) and do not necessarily represent the official views of, nor an endorsement, by HRSA, HHS or the U.S. Government.

OKDCN COMMUNITY RESOURCE ECHO

Free Geriatrics Education for Community Health Workers, Community Health Representatives, Case Managers, Outreach Workers and Other Community Professionals

AUGUST 6- SEPTEMBER 12, 2024

TUESDAY, AUGUST 6, 2024, 10 AM AND 12PM CST

Identifying Self Neglect in the Aging Community
Shahannah Sosa, Programs Field Representative, Oklahoma Human Services

TUESDAY, AUGUST 13, 2024, 10 AM AND 12PM CST

Recognizing and Coping with Sundowning
Andrea Golden-Pogue, MSN, RN, Educator, Health Promotion Sciences, OUHSC Hudson College of Public Health

TUESDAY, AUGUST 20, 2024, 10 AM AND 12PM CST

Staying Active and Healthy at Home
Nile Burge, Educator, OHAI

TUESDAY, AUGUST 27, 2024, 10 AM AND 12PM CST

Introducing the ABC's of LGBTQIA within the Elderly Population
Laine Soto, LCSW, Lead Therapist, Red Rock Behavioral Health

TUESDAY, SEPTEMBER 3, 2024, 10 AM AND 12PM CST

Improving Social Isolation and Loneliness within Older Adults
Karen Orsi, BA, Director, Oklahoma Mental Health and Aging Coalition, Vice Chair, National Coalition on Mental Health and Aging

TUESDAY, SEPTEMBER 12, 2024, 10 AM AND 12PM CST

Recognizing National Suicide Prevention Week: Cognitive Behavioral Therapy for Suicide Prevention
Mary Mohon, PsyD, Geriatric Clinical Psychologist
OKC VA Home Based Primary Care



This publication was supported by the Health Resources and Services Administration (HRSA) of the U.S. Department of Health and Human Services (HHS). The contents are those of the author(s) and do not necessarily represent the official views of, nor an endorsement, by HRSA, HHS or the U.S. Government.



WHAT IS PROJECT ECHO?

A collaborative model of virtual education for professionals who support older adults living at home or in another community-based setting. The format of a one-hour ECHO is a virtual, short expert presentation followed by a real-world case discussion.

Sign up today by visiting okdcn.org and selecting an event date or by scanning the QR Code.



AGE-FRIENDLY NURSING HOME ECHO PROJECT

What is an Project ECHO?

A collaborative model of virtual education for professionals who support aging adults living in community-based settings. The format of a one-hour ECHO is virtual, a 30 min. expert presentation with a real-world case discussion followed by a QI from a Hub Team member.

Free Geriatrics Education for staff in Community-Based living centers, and Other Community Professionals working with the aging population.

Starting July, 2023 Series 9

Wednesday, July 12, 2023 & Thursday, July 13, 2023
10:30 am CST

988 Suicide Hotline
Jeffery Dismukes, Director of Communication, Okla. Dept. of Mental Health & Substance Abuse Services

Wednesday, July 19, 2023 & Thursday, July 20, 2023
10:30 am CST

MDS Coding: Understanding & Making the Appropriate Choice
Diane Henry, RN, Administrative Prog. Manager, State RAI & OASIS Coordinator, OSDH

Wednesday, July 26, 2023 & Thursday, July 27, 2023
10:30 am CST

Diagnosis & Management of Cognitive Disorders
Dr. John Carment, MD, Geriatrics
Chief of Geriatrics & Clerkship Director
Associate Professor of Medicine

Wednesday, August 2, 2023 & Thursday, August 3, 2023
10:30 am CST

Depression & Anxiety in Aging Adults
Karen Orsi, Director, Oklahoma Mental Health & Aging Coalition

Wednesday, August 9, 2023 & Thursday, August 10, 2023
10:30 am CST

F Tags: Current Federal Focus
Beverly Clark, Manager of Training, LTC Services, Oklahoma State Department of Health

Wednesday, August 16, 2023 & Thursday, August 17, 2023
10:30 am CST

Memory & Sensory Care Units
Diana Sturdevant, PhD., BCNS-BC, APRN, CWS
Asst. Professor of Research, Fran & Earl Ziegler College of Nursing, OUHSC

Wednesday



Scan or click this QR code for access to all sessions that are recorded and available

Thursday



There is no cost to join an ECHO session. Free NAB credits for nursing home administrators. This program has been approved for Continuing Education for 6 total participant hours by NAB/NCERS—Approval 20240507-6-A92927-DL and 20240507-6-As

This publication was supported by the Health Resources and Services Administration (HRSA) of the U.S. Department of Health and Human Services (HHS). The contents are those of the author(s) and do not necessarily represent the official views of, nor an endorsement, by HRSA, HHS or the U.S. Government.



Oklahoma Dementia Care Network

How to contact us!

Lee A. Jennings, MD, MSHS
Chief, Section of Geriatrics and Palliative
Medicine

University of Oklahoma Health Sciences Center
lee-jennings@ouhsc.edu

Morgan Hamilton, MPH
Healthy Brain, Heart & Diabetes Program Manager
Oklahoma State Department of Health
Chronic Disease Prevention Service
Morgan.Hamilton@health.ok.gov



BOLD Public Health Center of Excellence on Dementia Caregiving (PHCOE-DC) and the Minnesota Northstar Geriatrics Workforce Enhancement Program

Joseph E. Gaugler, PhD

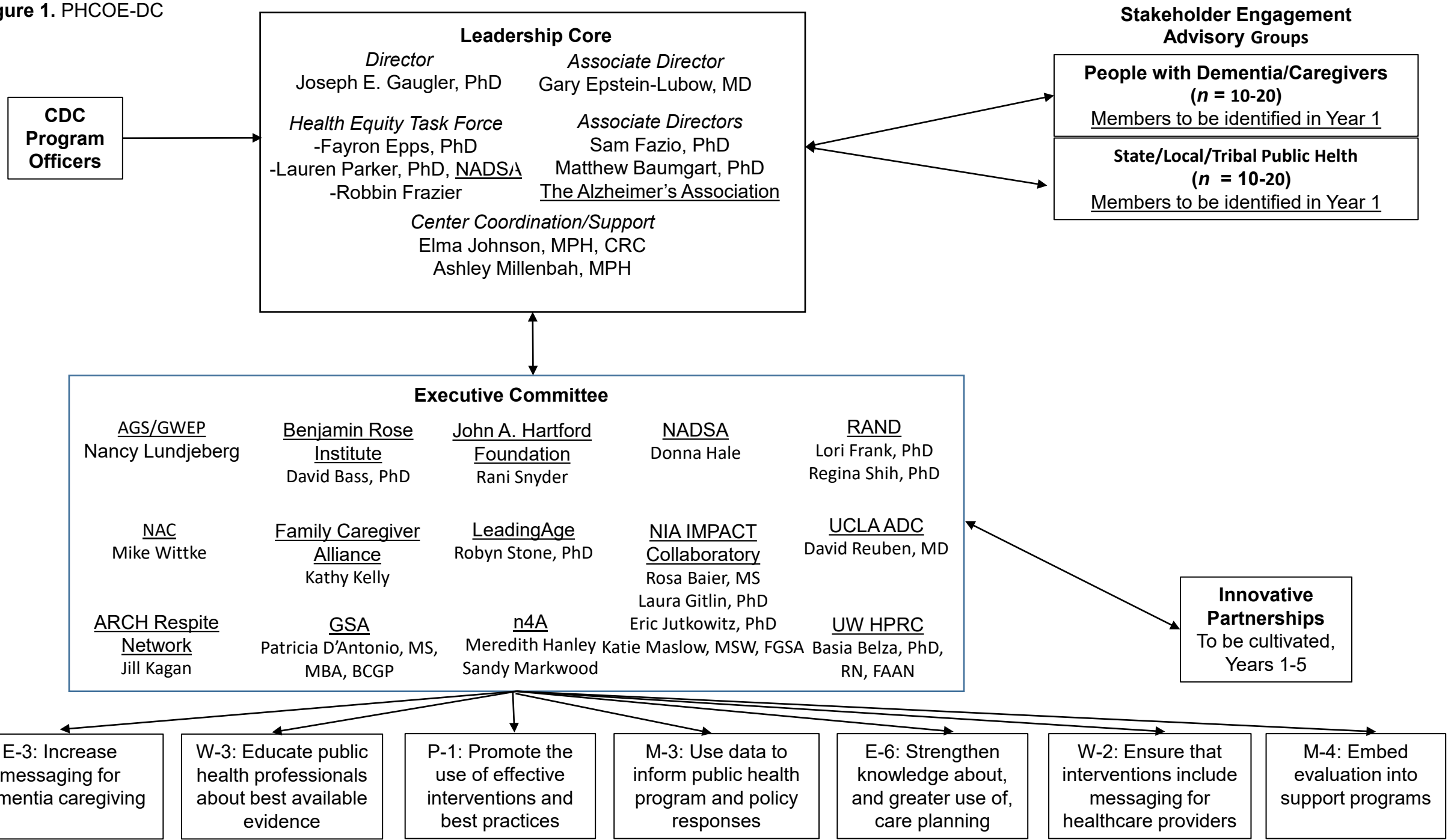
PHCOE on Dementia Caregiving

*Our **Mission** is to assist state, tribal and local public health agencies nationwide in developing their dementia caregiving-focused programs and initiatives.*

We achieve our mission by:

- 1. Providing expert **technical assistance** to public health agencies for selecting their caregiving-related goals.**
- 2. Improving access to & use of** evidence-based programs, tools, materials and best-practices in dementia caregiving.
- 3. Facilitating connections and collaboration** between public health agencies and a wide network of providers and organizations serving dementia caregivers.

Figure 1. PHCOE-DC



PHCOE-DC ↔ MN-GWEP

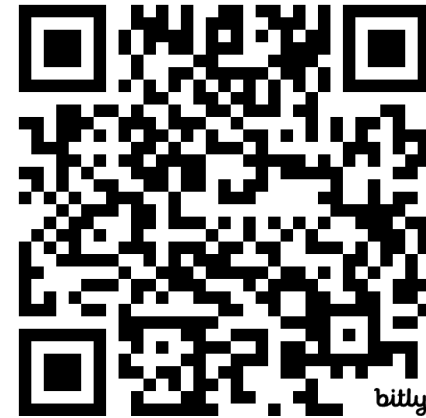
- Team Members

- Joe Gaugler, PhD
 - Director, BOLD PHCOE-DC
 - Leadership Core, MN-GWEP
- Ashley Millenbah, MPH
 - Project Coordinator, PHCOE-DC
 - Coordinator, Dementia Education Initiatives, MN-GWEP
- Robbin Frazier
 - Coordinator, Health Equity Task Force, PHCOE-DC
 - Community Liaison, MN-GWEP, Dementia Education Initiatives

- Initiatives

- MN-GWEP: Dementia Education
 - County visits
 - HRSA training modules
 - Conference initiatives
- MN-GWEP/PHCOE-DC: Alter, Webinars

Visit our Resource Hub



bolddementiacaregiving.org/resource-hub/



Education Resources to Teach Age-Friendly Care

Kristine Talley, PhD, CNP, RN, FGSA
carl0106@umn.edu



UNIVERSITY
OF MINNESOTA
Driven to Discover®



Age-Friendly Care and Education *Collection*

z.umn.edu/AgeFriendlyCollection

- **What it is:** Searchable repository of over 1,355 educational resources on Age-Friendly care
- **Audience:** educators, health professionals, learners seeking quality material on aging care, education, and research



How Material is Added

- Mining Websites & **GWEP Sites** for content
- Others can contribute their material
- Replacement for POGOe?

- **Demonstrate how to use:** search bar, keywords, resource types

Usage of Age-Friendly Care and Education Collection

Hosted by



NATIONAL CENTER for
INTERPROFESSIONAL
PRACTICE and **EDUCATION**

23,348 engagements
with website
between 3/17/2020-
6/30/2024

Top 10 Resources Accessed

Title	Type	Views
Post Traumatic Stress Disorder Case Study	Case Study	3783
Millie Larsen - Unfolding Case	Case Study	3529
ConsultGeri	Other	2832
Julia Morales and Lucy Grey - Unfolding Case	Case Study	2816
Henry and Ertha Williams - Unfolding Case	Case Study	2481
Sherman "Red" Yoder - Unfolding Case	Case Study	2270
Recommended Baccalaureate Competencies and Curricular Guidelines for the Nursing Care of Older Adults	Unpublished Document	2067
STOPP/START criteria for potentially inappropriate prescribing in older people: version 2	Journal Article	1680
Case Study: Mrs. Parker	Case Study	1642
Palliative Care Fast Facts and Concepts	Other	1570

Geriatric Education Toolkits

<https://mngwep.nexusipe.org/toolkits>

- **What it is:** Digital Learning Module, List of Resources for Faculty
- **Audience:** educators looking for online learning activities and other resources on geriatric topics, interprofessional learners
- **Created by experts and peer reviewed interprofessionally**
- **Educational designer and graphic artist part of team**



12 Available Toolkits

- Managing Urinary Incontinence
- Geriatric Assessment
- Maximizing Mobility
- Effective Medication Self Management
- What Matters
- Ageism
- Suicide in Older Adults
- Understanding Medicare, Medicaid, & Hospice Benefits for Providers
- HIV & Aging
- Clinical Care of the Immigrant Older Adult
- LGBTQ Aging Care
- Opioid Use Disorder



Support for GWEP

This project is supported by the Health Resources and Services Administration (HRSA) of the U.S. Department of Health and Human Services (HHS) as part of an award (1U1QHP53045-01-00). The contents are those of the author(s) and do not necessarily represent the official views of, nor an endorsement, by HRSA, HHS or the U.S. Government.

This project is part of the Minnesota Northstar GWEP, which is also supported by the Otto Bremer Trust and the University of Minnesota Office of Academic Clinical Affairs.





UNIVERSITY
OF MINNESOTA

Driven to Discover®

BOLD Public Health Center of Excellence on Early Detection of Dementia



Soo Borson, MD

Co-Lead, BOLD Center of Excellence on Early Detection of Dementia
Professor of Clinical Family Medicine, USC Keck School of Medicine
Deputy Editor, Journal of the American Geriatrics Society

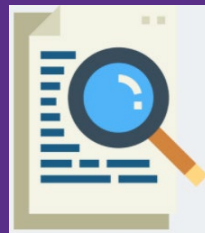
9/24/24

BOLD Public Health Center of Excellence on Early Detection of Dementia

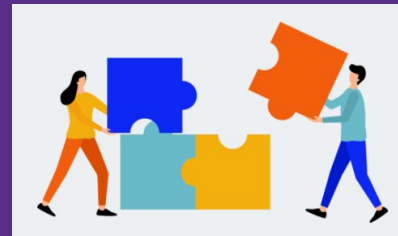
WHO WE ARE: A national resource for driving evidence-based public health strategies for early detection of dementia.

MISSION: Increase early detection of dementia nationwide.

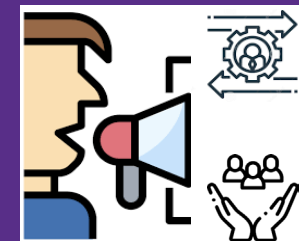
VISION: Better healthcare and well-being for older adults and their care partners through earlier detection of dementia.



Disseminate ways
to improve detection



Co-create solutions
with national partners

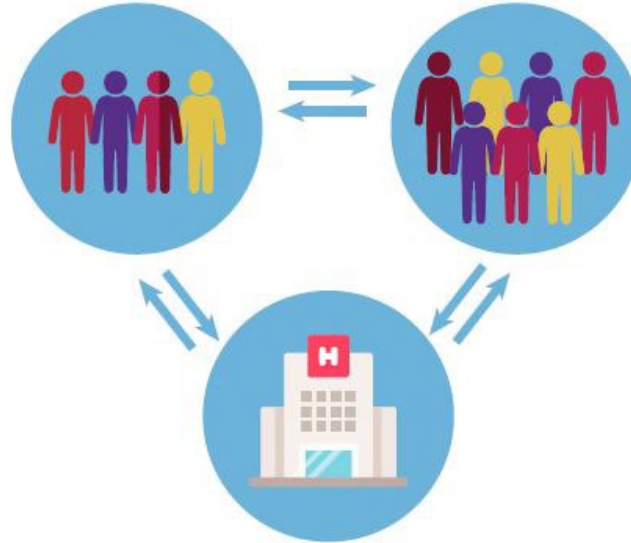


Promote change within
stakeholder organizations
nationwide

Organizational Strategic Focus Three Sector Approach

Person, Family,
Community

Public Health
Departments



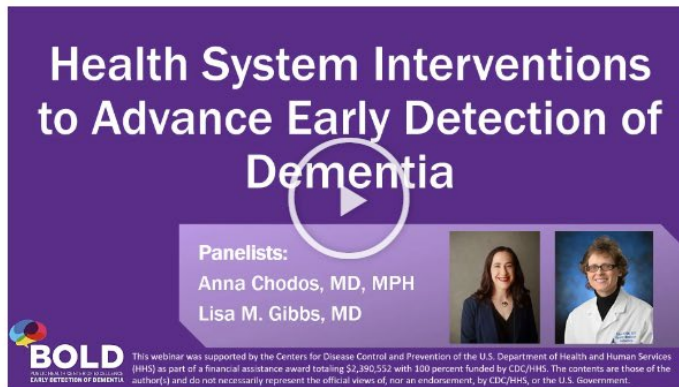
Health Care Providers
and Organizations

Webinars

The BOLD Public Health Center of Excellence on Early Detection of Dementia is pleased to offer our series of conversations about interventions to promote earlier dementia detection as a pathway to better care and outcomes.

Health System Interventions to Advance Early Detection of Dementia

Panelists:
Anna Chodos, MD, MPH
Lisa M. Gibbs, MD

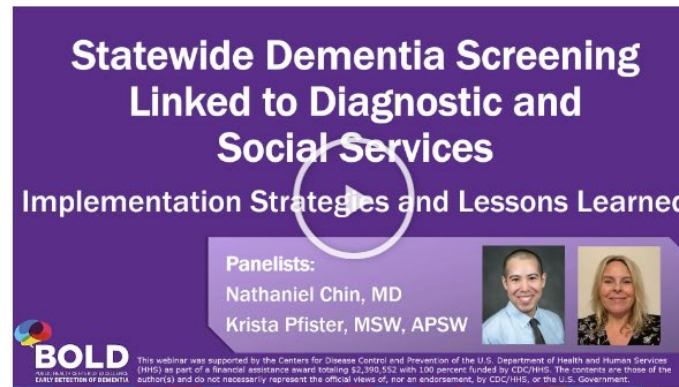


BOLD EARLY DETECTION OF DEMENTIA
This webinar was supported by the Centers for Disease Control and Prevention of the U.S. Department of Health and Human Services (HHS) as part of a financial assistance award totaling \$2,390,552 with 100 percent funded by CDC/HHS. The contents are those of the author(s) and do not necessarily represent the official views of, nor an endorsement, by CDC/HHS, or the U.S. Government.

Statewide Dementia Screening Linked to Diagnostic and Social Services

Implementation Strategies and Lessons Learned

Panelists:
Nathaniel Chin, MD
Krista Pfister, MSW, APSW

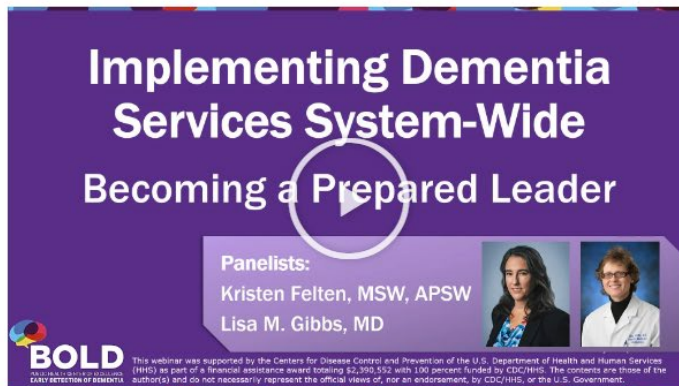


BOLD EARLY DETECTION OF DEMENTIA
This webinar was supported by the Centers for Disease Control and Prevention of the U.S. Department of Health and Human Services (HHS) as part of a financial assistance award totaling \$2,390,552 with 100 percent funded by CDC/HHS. The contents are those of the author(s) and do not necessarily represent the official views of, nor an endorsement, by CDC/HHS, or the U.S. Government.

Implementing Dementia Services System-Wide

Becoming a Prepared Leader

Panelists:
Kristen Felten, MSW, APSW
Lisa M. Gibbs, MD



BOLD EARLY DETECTION OF DEMENTIA
This webinar was supported by the Centers for Disease Control and Prevention of the U.S. Department of Health and Human Services (HHS) as part of a financial assistance award totaling \$2,390,552 with 100 percent funded by CDC/HHS. The contents are those of the author(s) and do not necessarily represent the official views of, nor an endorsement, by CDC/HHS, or the U.S. Government.

Increasing Equity in Dementia Research Requires Deeper Engagement with the African American Community

Community-Focused Brain Health & Aging Research with Black Men in the U.S. Lessons Learned

June 18, 2024

Panelists:
Joyce (Joy) Balls-Berry, Ph.D., M.P.E.
Robert W. Turner II, Ph.D.



BOLD EARLY DETECTION OF DEMENTIA
<https://bolddementiaedetection.org/>
NYUBOLDCenter@nyulangone.org

Webinar Excerpts

Short on time and can't watch a full webinar?

Catch up on the key take-aways in these short (<5 minute) clips!

Upcoming Webinar

December 2024

A conversation with Drs. Barak Gaster and Jackie Raetz:

"Cognition in Primary Care: Embracing Our Values."

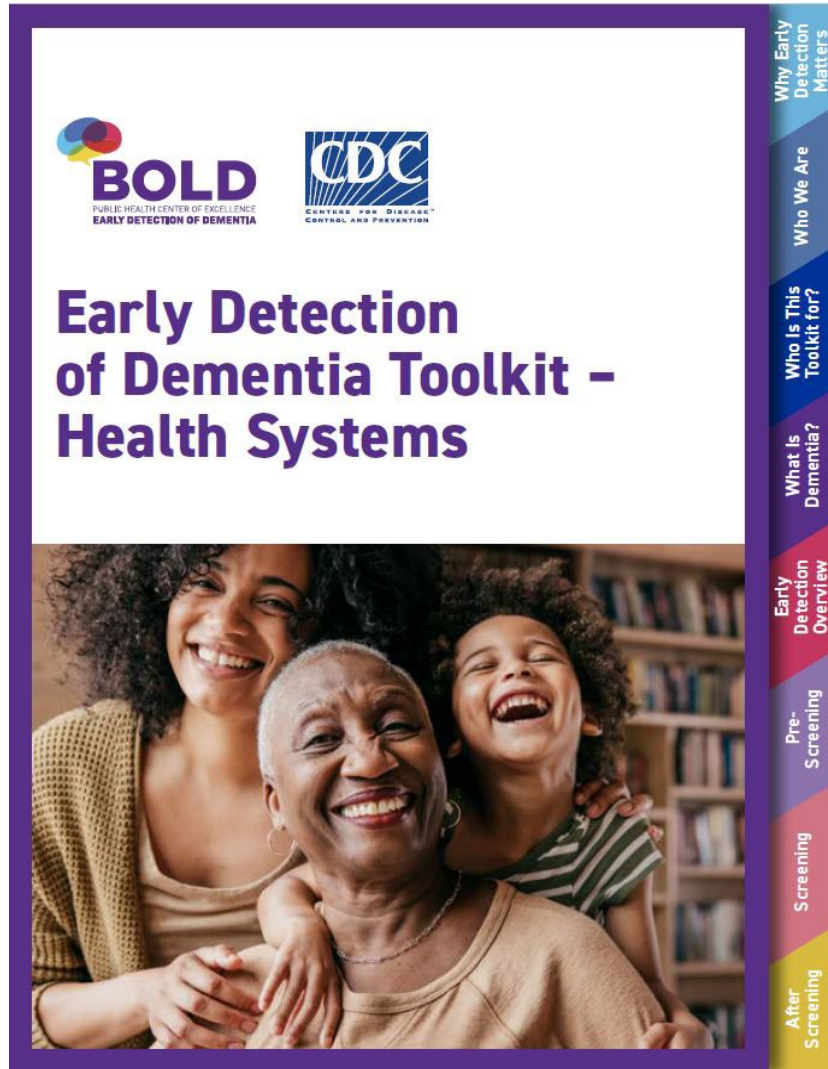
Keep an eye on our webinar page below or sign up for our Newsletter to register.

Visit our *Webinars* page to stay up to date on upcoming webinar announcements and watch our webinar recordings and short clips!

bolddementiadetection.org/webinars/



Early Detection Toolkit



Why Early Detection Matters	03
Who We Are	04
Who Is This Toolkit for?	05
What Is Dementia?	06
Early Detection Overview	08
The Importance of Early Detection	10
Indicators That Suggest Possible Cognitive Impairment	12
Ecological Model of Dementia Detection	13
Considerations for Developing a Dementia Detection Program	15
Pre-Screening	22
Building Trust	24
Use Positive Framing and Pay Attention to Your Body Language	25
Prepare Short, Simple Statements	26
Screening	30
The Difference Between "Detection," "Assessment," and "Diagnosis"	31
Tools Used to Detect Cognitive Impairment	31
Choosing the Right Cognitive Assessment Tool	33
After Screening	34
Navigating Conversations About Brain Health After Cognitive Assessment	35
Diagnostic Evaluation, Needs Assessments, and Referrals	37
Ongoing Communication With the Patient and Family	38


In the Pipeline...

Sector-specific Early Detection Toolkits

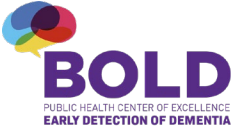
Implementation and Sustainment Decision Tree Guide



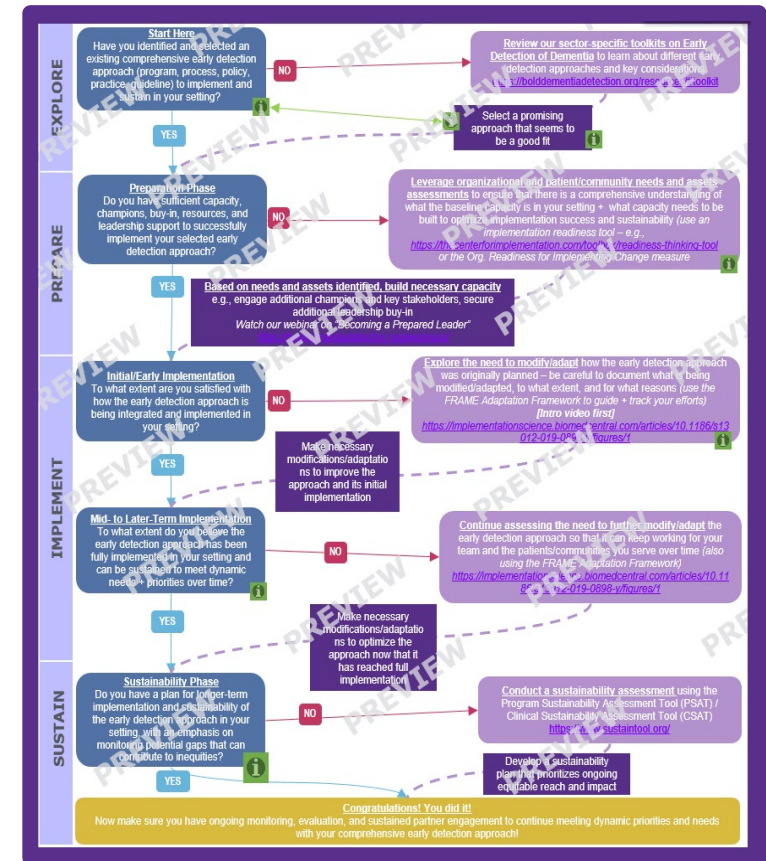
Health System Toolkit Supplement - Organizational Strategies



Early Detection of Dementia Toolkit – Health Departments



Early Detection of Dementia Toolkit – Community-Based Organizations



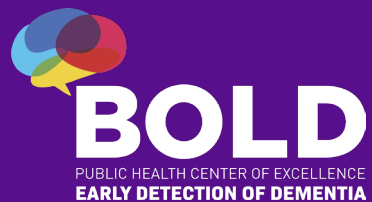
Key opportunities for collaboration between GWEPs and DOHs

Eyes on the Prize

Why We Do This...

and How We Can Do It Better Together

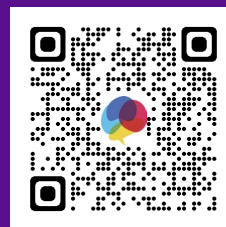
- **Define the outcomes that matter**
- **Choose a framework for cross-sector integration**
- **Train across sectors**
- **Develop and refine workforce roles**



Thank you

Sign up for our Center newsletter:

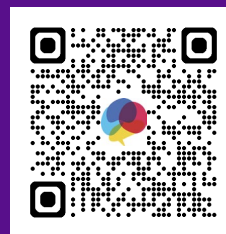
bolddementiadetection.org/contact



Technical Assistance:

Tell us how we can help

bolddementiadetection.org/technical-assistance/



BOLD PHCOE on Early Detection of Dementia



Q&A Session & Evaluation

Moderated by: Jane F. Potter, MD, FACP, AGSF

- Please submit your questions with the Q&A function and indicate who your question is for.
- Please scan the QR code to complete an evaluation for today's webinar collaboration. We value your feedback.



<https://www.surveymonkey.com/r/NPTXMNB>