



Successful Public Health Approaches in Dementia Caregiving: *Oklahoma State*

A Virtual Roundtable Series

December 12th, 2024



Welcome from...



Elma Johnson, MPH, *Coordinator*

BOLD Public Health Center of Excellence on

Dementia Caregiving (PHCOE-DC)

Center for Healthy Aging and Innovation (CHAI)

University of Minnesota



Land acknowledgement




The University of Minnesota Twin Cities is located on traditional, ancestral, and contemporary lands of Indigenous people. We acknowledge with gratitude the Land itself and the People. We take to heart and commit through action to learn and honor the traditional cultural Dakota Values: Courage, Wisdom, Respect and Generosity.



The BOLD Public Health Center of Excellence on Dementia Caregiving (PHCOE-DC)

Designed to support state, tribal and local public health agencies nationwide in developing their dementia caregiving-focused programs and initiatives, by...

Visit our
website!

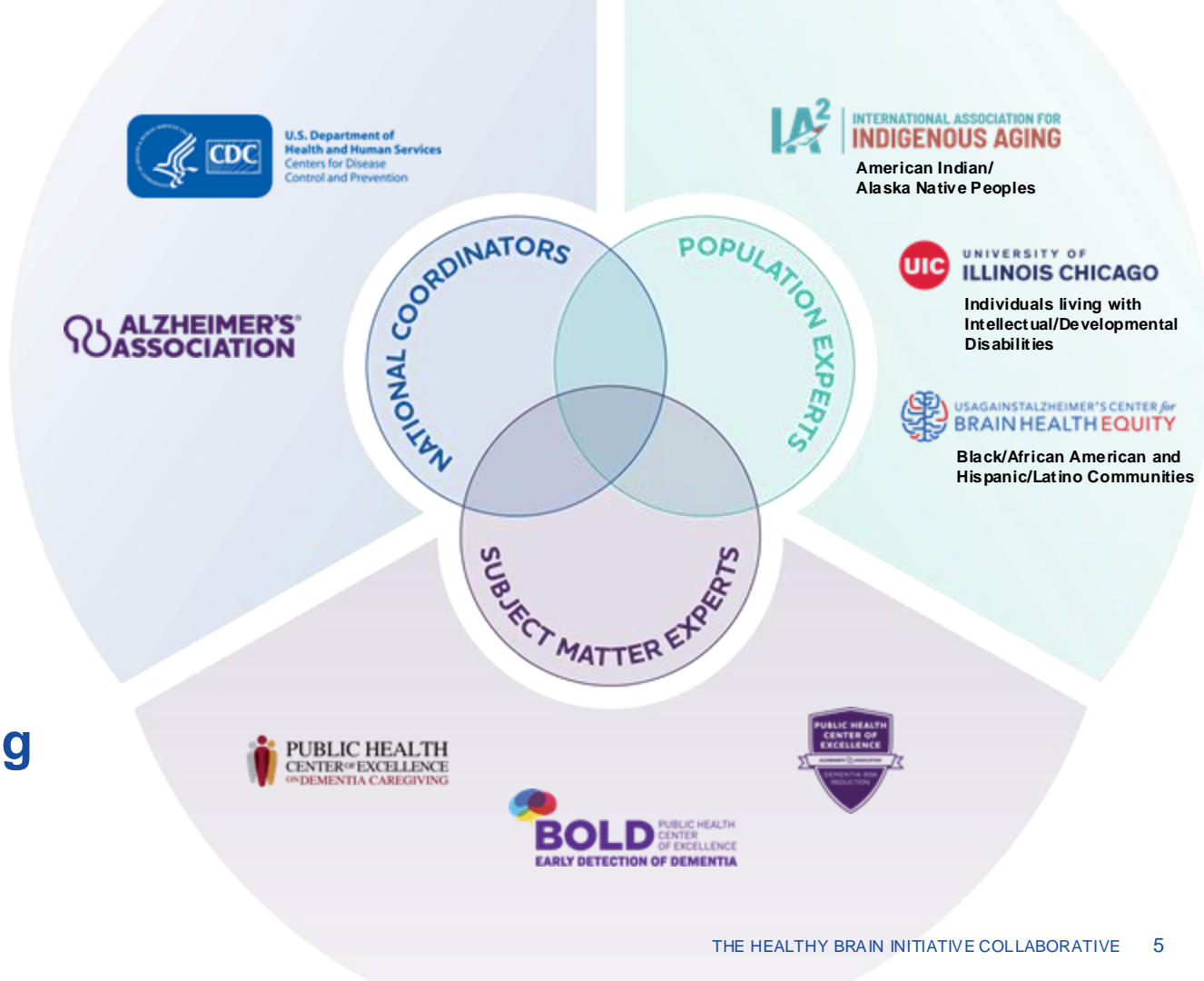
-  Improving access to evidence-based programs and best practices.
-  Facilitating connections and collaboration among public health agencies and a wide range of service organizations.
-  Providing technical assistance for identifying, selecting implementing effective public health interventions and strategies.



 **HEALTHYBRAIN
INITIATIVE**
Collaborative



hbicollaborative.org



Successful Public Health Approaches in Dementia Caregiving: *A Virtual Roundtable Series*

- ✓ **Bi-monthly**, roundtable series for **public health**.
- ✓ We will highlight **the story of one state**.
- ✓ Opportunity for **networking, peer-learning and idea generation**.
- ✓ A **community of practice**, where agencies can share their successes and learnings, and get ideas for action.



Reminders for the Presentation Session

- Please, **MUTE yourself** and **turn your VIDEO ON** while the panelists are presenting.
- Display **your name and organization in Zoom**.
- **Submit your questions for the speakers into the Q&A feature**.
- During the Q&A time, please raise your hand if you wish to speak and **only unmute if you are prompted**.
- Use the **CHAT to share comments, resources, links, and ideas**.
- Feel free to use your reaction buttons!
- The recording, slides and resources will be shared after the event.
- **Please complete the survey at the end of this event** (linked in chat). We greatly appreciate your feedback!

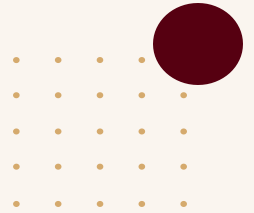
bit.ly/Oklahoma_evaluation_roundtable



Poll Question

In what capacity are you attending this event?

- BOLD Public Health Agency
- Non-BOLD Public Health Agency
- Community organization/service provider
- Person living with dementia
- Interested caregiver and/or community member
- Care/clinical professional
- Other



Welcome to our speaker!



Morgan Hamilton, MPH

Healthy Brain, Heart, and Diabetes Program Manager
Chronic Disease Prevention Services
Oklahoma State Department of Health



THE 10 ESSENTIAL PUBLIC HEALTH SERVICES

To protect and promote the health of all people in all communities

The 10 Essential Public Health Services provide a framework for public health to protect and promote the health of all people in all communities. To achieve optimal health for all, the Essential Public Health Services actively promote policies, systems, and services that enable good health and seek to remove obstacles and systemic and structural barriers, such as poverty, racism, gender discrimination, and other forms of oppression, that have resulted in health inequities. Everyone should have a fair and just opportunity to achieve good health and well-being.



Created 2020



Oklahoma Healthy Brain- Working with the Tribes

Morgan Hamilton, MPH
Healthy Brain, Heart and Diabetes Program Manager



Agenda

1

Overview of
Oklahoma

2

Oklahoma
Tribal Overview

3

Overview of
Oklahoma Healthy
Brain Initiative

4

Challenges/
Successes

5

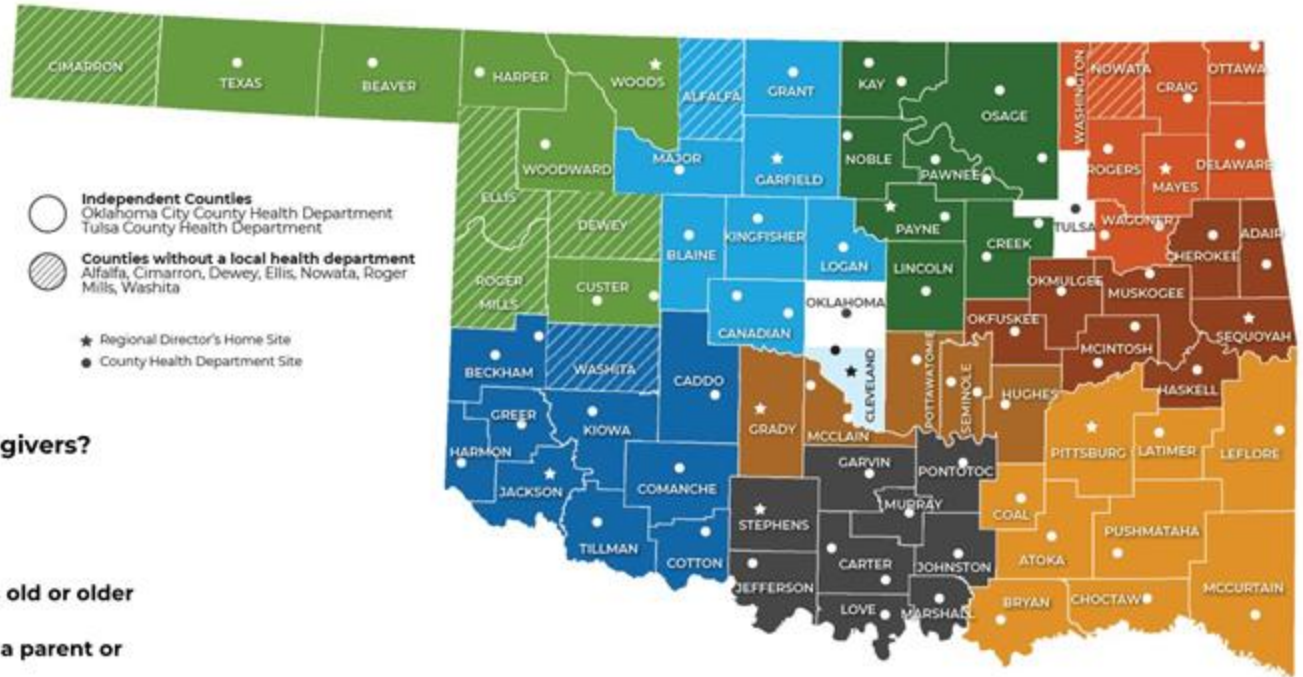
Dementia
Friendly
Oklahoma

6

Future
Projects

Oklahoma Overview

- Population: ~4 million
 - 16.6% are age 65 +
 - # of Older Oklahomans is projected to increase by 21.3% by 2034
- 77 Counties
 - 59 are considered Rural



Who Are Oklahoma's Caregivers?

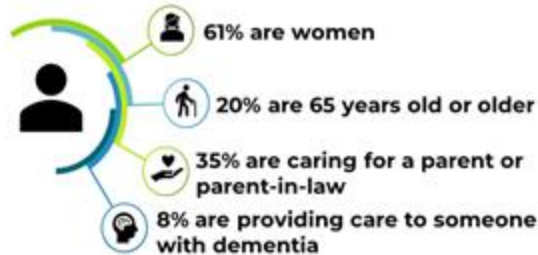
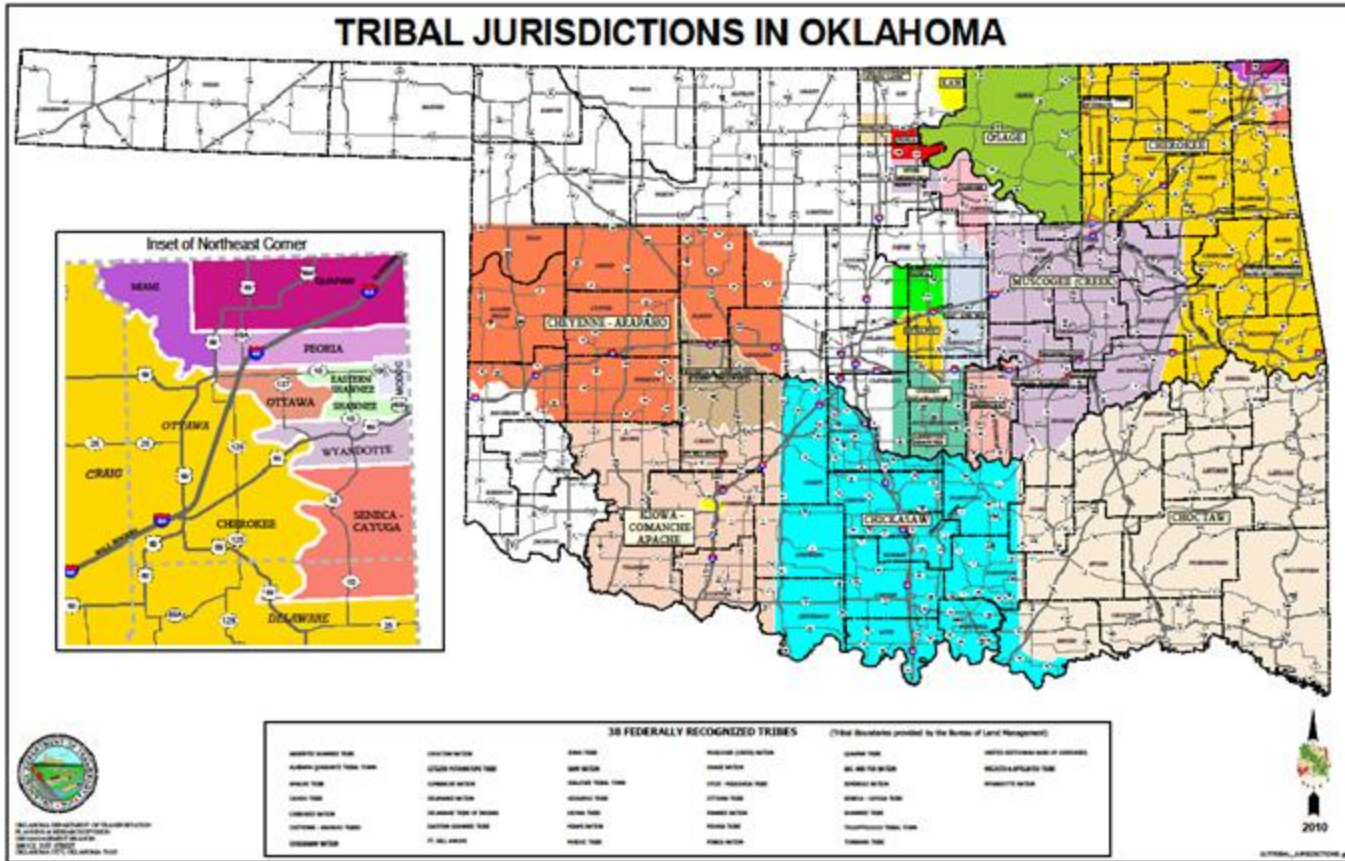


Figure 14. Who are Oklahoma's Caregivers? (Source: Center for Disease Control and Prevention, 2019)

Oklahoma Tribal Overview



38 Federally
Recognized Tribes

Write in the chat:
Does your state
work with the
tribes in your
state?

Oklahoma Healthy Brain Initiative Timeline



Oklahoma Healthy Brain Initiative

OHBI Coalition

- Created and work on the OK ADRD State Plan
- 75 Member and Partner Organizations and Individuals
- 5 Workgroups
 - Public Education
 - Workforce Development
 - Data & Surveillance
 - Policy Development
 - Dementia Friendly Oklahoma
- Vision
 - To advance brain health in Oklahoma.
- Mission
 - To promote a system of collaboration among Oklahoma Healthy Brain Initiative stakeholders.

Programs and Services

- Offer Educational Programs
 - Partner with Alzheimer's Association and Oklahoma Healthy Aging Initiative
 - Dementia Dialogues
 - SAVVY Caregiver
 - Second Wind Dreams Virtual Dementia Tour
 - Community
 - Hospital
- Dementia Friendly Oklahoma Recognition Program
 - Dementia Friendly Work@Health Training
- Technical Assistance
- Collateral Materials

Challenges & Successes

- **Challenges**

- Connecting with the right person
- Political Climate
 - Trust with State Agencies
 - Data Sharing
- Funding and/or Capacity
 - HBI Roadmap for Indian Country

- **Successes**

- Presented at the Southern Plains Tribal Health Board (SPTHB) Conference
 - Connected with Absentee Shawnee and other tribes to present data multiple times
- Seminole Nation- Dementia Friendly Oklahoma Partners
- Attend Tribal Events- Cheyenne Arapaho Elders Event, IHS CHW Conference, etc.
- Absentee Shawnee- Alzheimer's Disease Program Initiative "Seeking Hope"

Audience Question:

Have you had any trust or regulatory issues in working with tribes in your state?

Dementia Friendly Oklahoma



Businesses /
Organizations



Campuses



Restaurants



Faith
Organizations



Communities
Towns / Cities

- 101 partners currently which span all 77 counties.
 - All OSDH County Health Department staff (68 counties- 82 locations) trained and recognized as partners.
 - 3 rural hospitals
 - 1 Tribal Nation- Seminole Nation
- Required Dementia Friendly Work@Health training for majority of staff
- Provide Technical Assistance
 - Resources
 - Continued Education:
 - Staff
 - Community Members

Future Projects

- Tribal Survey
 - Contract with Southern Plains Tribal Health Board
 - Assist with creation, dissemination, and analytics
 - Survey will replicate 2023 survey but culturally competent
 - Alzheimer's Disease and Dementia Awareness
 - General Health
 - Health Behaviors
- Dementia Friendly Oklahoma
 - We hope to continue training other tribes
- Submitted abstract for Southern Plains Tribal Health Board 2025 conference

Questions?

Morgan Hamilton, MPH
Morgan.Hamilton@health.ok.gov
HealthyBrain@health.ok.gov

Thank you for joining us today!

Please take a moment to complete a brief survey. Scan the QR code or click the link in the chat.

We appreciate your feedback!

